

# WESTERN EXPRESS

Research Journal of Early Western Mails

Vol. 66 No. 3 □ Whole No. 261 □ September 2016 □ Unit No. 14 , American Philatelic Society

Quarterly Publication of the  
**Western Cover Society**

## TABLE OF CONTENTS

President's Message, etc.....1

**Railroad Propaganda Covers**  
*By David D'Alessandris*.....5

**California Straight Line, Arch,  
and Oval Postmarks 1849-1870**  
*By James W. Milgram, M.*.....23

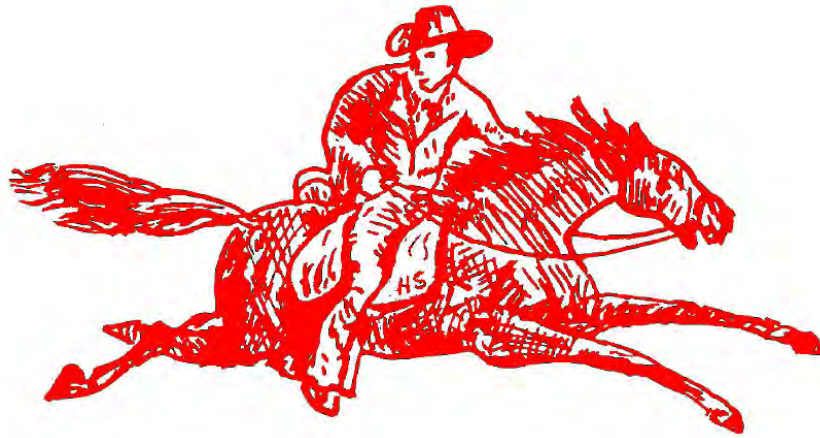
**Overland Mails of the Westward  
Expansion: 1832 to 1869 - Part IV**  
*By Steven Walske*.....35

**By Way of Desert Dispatch or  
Military Express**  
*By Oscar Thomas*.....49

**Crittenden - The Missing Link**  
*By John Birbinbine II*.....50

**Contents of the Cover**  
*By David F. New*.....51





## Recent Awards

**APS StampShow 2009 (Pittsburgh, PA) - GOLD**  
**Chicagopex 2009 (Arlington Heights, IL) - GOLD**

## **MEMBERSHIP INFORMATION**

If you collect Western Express covers, Territorials, Town cancellations, or anything pertaining to the mails of the Old West, you are invited to join the Western Cover Society and enjoy meeting other collectors.

*Western Express* (ISSN 0510-2332) is published quarterly (March-June-September-December) by the Western Cover Society, which is a not-for-profit 501 (C-3) tax exempt organization. Western Cover Society seeks to fulfill its charitable and educational mission through the publication of books and journals. All contributions above the basic subscription rate are tax deductible and will go to support publication of material.

The annual membership in the society includes a subscription to *Western Express*. All who share an interest are invited to join. Annual membership is \$35.00 per year. Membership application and back issues can be obtained by contacting Robert Chandler at our web site, [www.westerncoversociety.com](http://www.westerncoversociety.com). Claims for missing issues made within six months will be serviced free of charge.

All photographs and published material are assumed to be the copyright of the Western Cover Society unless the copyright is retained by the author. Contact the Secretary for copyright permission or the author where noted. Photocopy permission for non-resale classroom usage is freely given.

Western Cover Society does not accept responsibility for views expressed in articles or advertisements that appear in the pages of *Western Express*. It provides opportunities for publication of material that may represent ideas, judgments and opinions. The publication of articles or advertisements should not be construed to promote collecting or establish pricing of material that is in private hands. Send manuscripts to the editor for publication consideration. All manuscripts are subject to peer review.

**Lifetime Membership \$500.00 one time**      **Patron Membership \$75.00 per year**  
**Sustaining Membership \$50.00 per year**      **Active Membership \$35.00 per year**

**Foreign Memberships require an additional \$35.00 per year postage, in addition to any membership fee noted above**

Send application with appropriate check to:

Western Cover Society  
Robert Chandler, Secretary  
430 Ponderosa Court  
Lafayette, CA 94549

**Please state your collecting interests. Your application will be acted upon at the next meeting of the Board of Directors.**

---

**Advertising rates, per issue: Full page \$150.00, half page \$85.00, quarter page \$50.00**  
**Four consecutive insertions, paid in advance: Full page \$550.00, half page \$300.00, quarter page \$175.00**

**Submit ads to the General Editor: Ken Stach, PO Box 6; Letcher, SD 57359 ([kenstach@santel.net](mailto:kenstach@santel.net))**

**President's Message**

Submitted by Michael Perlman

This is the President's message that I never wanted to write. I'm sorry to say that my good friend Oscar Thomas has passed away. Oscar was a western collector who held the position of Treasurer for the Western Cover Society for 18 years. I first met Oscar in May of 2005 at the H. R. Harmer's sale of the Dale-Lichtenstein western collection. After the sale concluded, Oscar introduced himself to me. That was the beginning of a great friendship. My involvement with the Western Cover Society is entirely due to my friendship with Oscar. In 2006, he urged me to become more involved with the Society, adding that the organization could only be sustained by the involvement of younger collectors. Oscar had a tremendous knowledge of western postal history which he was happy to share with everyone. For all of his knowledge, I will remember him more for always having a big smile. He had a tremendous sense of humor and you always had to be careful or you might end up the victim of one of his practical jokes. We are all poorer today for his passing.



Oscar Thomas showing off one of his favorite covers in August of 2015.

**Secretary's Report**

Submitted by Robert Chandler

Dr. Chandler informed the editor that he would supply an update on membership changes, etc. in the December issue, with no other news to report at this time.

**Treasurer's Report**

Submitted by Ryan Baum

Financial highlights of the past quarter include the movement of the Society's operating account to one of our favorite subjects of research, Wells Fargo. Membership continued to climb and we reached 33 lifetime members. Otherwise, the Office of the Treasurer enjoyed a quiet summer as we are midway through the year and have limited dues activities. This allowed your Treasurer to use a weekend to host friends on a hike near Tioga Pass to the town site of Bennettville and the *Great Sierra Consolidated Silver Mine* in Mono County, California. A report of this mine, its postal history, and its lasting benefit to Yosemite National Park will be reported to members at the 2017 Western Cover Society Annual Meeting to be held in conjunction with Westpex.

Should you have any dues questions or want to swap stories and images of covers, feel free to write me anytime at [ccdollar@hotmail.com](mailto:ccdollar@hotmail.com).

**Advertising Director's Message**

Submitted by Rick Mingee

**Bringing Home the Gold!** Coming off the Grand Award win at APS StampShow at Grand Rapids, Michigan in August of 2015, the society's new book, *Mails of the Westward Expansion, 1803 To 1861* (authors Steven Walske & Richard C. Frajola) received 91 points and a gold award in the Literature Class at World Stamp Show-NY 2016 (May/June 2016). That's two successes in as many tries! An image of the medal award is shown below. CONGRATULATIONS to WCS!



## In Memoriam - Oscar Melton Thomas (WCS #1053)

By Ken Stach

Oscar Melton Thomas was born December 1, 1946 in Artesia, CA, the son of Emma and Melton Thomas. He passed away August 15, 2016 at the age of 69, after a nearly three year struggle with esophageal cancer.

Oscar leaves behind his wife of 49 years, Sandra Thomas; his daughter Jennifer Snow, her husband Manny Santos, and their children Sierra and Paxton; his son Justin Thomas, his wife Rocio Thomas, and their daughter Sofia; and his sister Ginger Harris.

Oscar was proud to have served his country from 1967 to 1972 as a member of the United States Navy, being discharged as a petty officer, first class. He always retained an interest in naval postal history as a result, although he never collected it per se to my knowledge, and we would talk from time-to-time about some interesting cover he had seen or, more frequently, the ocean-travel related content of some letter.

“OT”, as many of us called Oscar, gained an interest in western express postal history in a story he related to me only four days before his passing. Oscar said he was at AMERIPEX ‘86 in Chicago, going from dealer to dealer asking for covers from Inyo and Mono Counties of California (an area that remained of prime collecting interest to Oscar until his death). It so happened that WCS icon Irwin Vogel was standing nearby talking with some fellow collectors and overheard Oscar’s interest. Irwin told Oscar about the Western Cover Society, gave him a copy of *Western Express*, and the rest, as they say, “is history.”



**Oscar listens attentively to a presentation at Richard Frajola’s “Taos Philatelic Rendezvous” held in Taos, NM in September, 2013.**

Oscar joined the Western Cover Society as member #1053, a designation he used frequently in his correspondence and in the articles he wrote for *Western Express*, including one being published posthumously in this issue (see page 49). He acted as the society’s treasurer for 18 years, until his failing health intervened, thereafter becoming a Director on the WCS Board.

Oscar’s “magnum opus” to the hobby was his 2013 publication of the two-volume set of books entitled “The Western Express Companies, 1850-1890.” Such was the importance of this set of books that it won the prestigious Stanley B. Ashbrook Cup, given by the United States Philatelic Classics Society (USPCS), perhaps the highest honor any philatelic publication can receive. “Western Express Companies” will undoubtedly be “the” reference work for western express collectors for generations to come.

“OT” was instrumental in my development as a collector of western express covers. He jokingly said that he and Jim Blaine “created a monster” in nurturing my interest in the hobby. Our shared interest in the hobby changed through the years, though, such that we became much closer as friends than we did as fellow collectors. Many times, especially toward the end, we’d talk on the phone for an hour without once broaching the subject of postal history.

Oscar was a great man, a true friend, and a tremendous asset to our hobby. I will miss him greatly.



**Oscar ventured to South Dakota in August, 2013 to help editor Ken Stach paint his barn.**

*The family has asked that donations be made to the WCS in lieu of flowers. A link is available on our website at [www.westerncoversociety.org](http://www.westerncoversociety.org).*

## Western Cover Society - Officers & Directors

| Officers & Directors | Office         | Email                                  | Address                                       | Phone Number |
|----------------------|----------------|--|---|--------------|
| Michael Perlman      | President      | michael.perlman<br>@bm1.brandsmart.com | Hollywood, FL 33312                           | 954-249-5050 |
| Steve Walske         | Vice-President | swalske@myriadllc.com                  | San Francisco, CA 94118                       | 415-346-9001 |
| Robert Chandler      | Secretary      | chandlersbasset@yahoo.com              | PO Box 455<br>Lafayette, CA 94549-0455        | 925-946-0921 |
| Ryan Baum            | Treasurer      | ccdollar@hotmail.com                   | PO Box 4187<br>Davis, CA 95617-4187           | 530-210-0523 |
| Larry Ballantyne     | Director       | lballantyne@att.net                    | PO Box 6634;<br>Katy, TX 77491-6634           | 281-579-6276 |
| Jim Blaine           | Director       | kathleen.plante@sbcglobal.net          | Vacaville, CA 95688                           | 707-446-9076 |
| Dale Forster         | Director       | dale@oregonusa.net                     | P.O. Box 686<br>Portland, OR 97207            | 503-228-6399 |
| Fred Gregory         | Director       | ffgregory@earthlink.net                | PO Box 1175<br>Palos Verdes Estates, CA 90274 | 310-375-7991 |
| George Kramer        | Director       | gjkk@optonline.net                     | Clifton, NJ 07013-3853                        | 973-471-8660 |
| David Snow           | Director       | dwsnow@centurylink.net                 | Portland, OR 97215                            | 503-238-7619 |
| Ken Stach            | Director       | kenstach@santel.net                    | PO Box 6<br>Letcher, SD 57359                 | 605-248-2620 |
| Bill Tatham          | Director       | bill@williamtatham.com                 | Santa Rosa, CA 95404-1922                     | 707-623-9481 |
| Rick Mingee          | Director       | rmingee@frii.com                       | Castle Rock, CO 80104                         | 303-921-4702 |
| Oscar Thomas         | Director       | othomas@earthlink.net                  | PO Box 604;<br>Lake Forest, CA 92609          | 949-586-4972 |
| Edward Weinberg      | Past-President |  |   |              |

## Western Express - Section Editors

| <u>Section Description</u>                              | <u>Editor</u>    | <u>Email</u>                           | <u>Address</u>                                 | <u>Phone Number</u> |
|---|------------------|--|--|---------------------|
| <b>General Editor</b>                                   | Ken Stach        | kenstach@santel.net                    | PO Box 6<br>Letcher, SD 57359                  | 605-248-2620        |
| <b>The Express Mails</b>                                | Robert Chandler  | chandlersbasset@yahoo.com              | PO Box 455<br>Lafayette, CA 94549-0455         | 925-946-0921        |
| <b>California &amp; Nevada<br/>Towns</b>                | Bill Tatham      | bill@williamtatham.com                 | Santa Rosa, CA 95404-1922                      | 707-623-9481        |
| <b>Western Routes</b>                                   | Michael Perlman  | michael.perlman<br>@bm1.brandsmart.com | Hollywood, FL 33312                            | 954-249-5050        |
| <b>Pacific Northwest, B.C.<br/>and Vancouver Island</b> | Dale Forster     | dale@oregonusa.net                     | PO Box 686;<br>Portland, OR 97207              | 503-228-6399        |
| <b>Hawaii &amp; The Pacific</b>                         | Fred Gregory     | ffgregory@earthlink.net                | PO Box 1175;<br>Palos Verdes Estates, CA 90274 | 310-375-7991        |
| <b>Trans-Mississippi West</b>                           | Larry Ballantyne | lballantyne@att.net                    | PO Box 6634;<br>Katy, TX 77491-6634            | 281-579-6276        |

You get one chance to sell your collection for the highest price.  
When you sell through Siegel, you take no chances.



Estimate \$300,000-400,000  
SOLD FOR \$460,000



Estimate \$40,000-50,000  
SOLD FOR \$132,250



Estimate \$30,000-40,000  
SOLD FOR \$120,750



Estimate \$30,000-40,000  
SOLD FOR \$149,500



Estimate \$500,000-750,000  
SOLD FOR \$632,500



Estimate \$200,000-300,000  
SOLD FOR \$299,000

The spectacular results of our December 2009 sale of the Pony Express collection formed by Thurston Twigg-Smith provide yet another demonstration of the Siegel firm's extraordinary ability to present and promote auctions. When you decide to sell your collection, doesn't it make sense to work with experienced professionals who know the material and the market?

Robert A. Siegel  
AUCTION GALLERIES, INC.

## Railroad Propaganda Covers

By David D'Alessandris

Railroad propaganda envelopes were used in California, primarily in the 1859-61 time period, to lobby for construction of a transcontinental railroad. This article attempts to provide a comprehensive listing of the designs and a census of known covers. Listed on the pages that follow are nine different railroad propaganda cover designs, designated as Types A through I. There are twenty subtypes, after taking into account different printers' imprints and directional endorsements. The census includes 65 covers. As always, this census is likely incomplete, as additional finds and reports will increase these numbers.

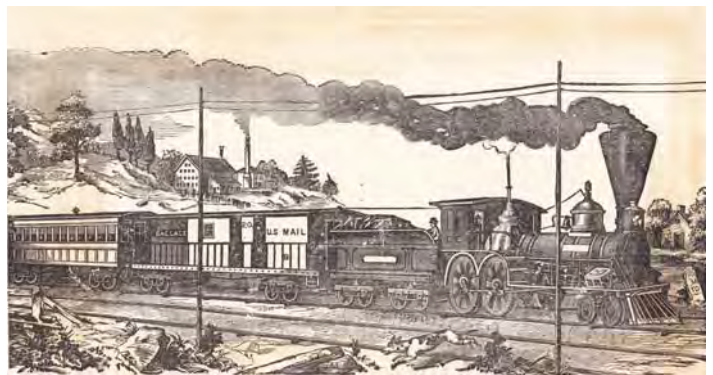
This census is based upon a search of electronic records, including *inter alia* auction sales records from Matthew Bennett International, Daniel F. Kelleher, Schuyler Rumsey Auctions, and Robert A. Siegel Auction Galleries, expertizing certificates from the Philatelic Foundation, the Philamercury cover database, and the Western Cover Society website. In addition, the author requested information and scans on Richard Frajola's Philamercury message board, and in an advertisement in the December, 2015 issue of the *Western Express*.<sup>(1)</sup> The census does not include the "Putt's Overland Envelopes" without an illustration of a train, although the satirical envelopes were advocating for the construction of a transcontinental railroad.

A transcontinental railroad had been proposed at least as early as 1835; however, demands for a transcontinental rail link grew following the gold rush. In 1855, the first railroad within California opened between Sacramento and Folsom. Theodore D. Judah was involved in the construction of internal railroads in California and became a proponent of a transcontinental rail link, unsuccessfully lobbying Congress in Washington DC, and then returning to California where he was able to convince the California legislature to call a Railroad Convention to encourage Congress to sponsor a railroad over the central route.<sup>(2)</sup>

The earliest uses of railroad propaganda covers roughly correspond with Judah's 1859 lobbying for a Railroad Convention, so it seems reasonable to infer that the railroad propaganda envelopes were associated in some way with this lobbying effort. Although there are some late uses of the railroad propaganda covers, for the most part they appear to have dropped out of use around the start of the Civil War, when it became obvious that the railroad would not be built due to the war effort. What effect, if any, the propaganda covers had on the debate in Congress is unknown.

The census provided at the end of this article is organized around the nine basic design types, with the various printer's imprints, directional endorsements, and minor design changes broken out as sub-types. The design types are referred to as Types A through I for simplicity of reference, in a rough order of scarcity from most common to most scarce, but keeping similar designs together.

The railroad designs appear to be stock images, or perhaps locally produced wood cuts copied from stock images. The most commonly seen image, design Type A, is a rough copy of the well-known wood engraving shown in Figure 1, which has the caption, "Migrating at the present time from Connecticut to Iowa, distance 1300 miles, time 3 days, number of passengers 360."



**Figure 1. The Type A design was likely inspired by this engraving.**

Note the similarity of the railroad engines, including the steam plume apparently coming from a whistle just in front of the cab, the cable to the bell behind the smokestack, and the railing on the mail car behind the tender. The engravings are also similar in the trees and building on the hillside behind the house, and the second set of tracks in the foreground. However, the railroad propaganda covers have the train passing over a small bridge at left, not included in the apparent source engraving, and the propaganda cover has two passenger coaches following the mail car, while the apparent source engraving only includes one passenger car. This image is also available on the Library of Congress' webpage.<sup>(3)</sup> There are other versions of the engraving, but with small variations. For example, one version of the engraving exists with three passenger coaches behind the mail car. There is also a color tinted version of the engraving.

It is even more obvious that design Type B uses a stock image because the illustration is of an early steam engine with a Haycock boiler, also known as a haystack boiler or a "coppernob."<sup>(4)</sup> These early steam engines had the boiler in a vertical orientation, rather than horizontal, as in nearly all railroad steam engines after the 1840s. Figure 2 is a bill of lading for the Boston & Providence Railroad, Stonington Line illustrated with the same stock engraving as Design Type B. The author has not located stock images similar to the other design types, but they likely exist.

Many of the railroad propaganda covers lack year dates; however, the earliest reported cover appears to be from May 1859, shortly before the Railroad Convention. As noted by the dates of the

postmarked covers in the census on the pages that follow, most of the propaganda covers appear to have been used in the 1859-61 time period. However, there are a number of later uses, franked with 1861 issue stamps. A February 18, 1864 cover is the latest year-dated cover recorded. Unlike with Civil War patriotic covers, there do not appear to be large numbers of unused railroad propaganda covers. The author has only seen one unused example of design Type C.

The majority (47 of 65) of the railroad propaganda covers contain endorsements for the Butterfield Southern Overland route, via Los Angeles. However, there are five designs endorsed via Placerville and Salt Lake, for carriage by the Chorpenning route, with 17 covers recorded.<sup>(5)</sup> Ironically, roughly half of these covers did not travel on the Chorpenning route. There are six covers with Design Type A-5, with the via Placerville printed endorsement. Of those covers, only two appear to have been carried on the Chorpenning route. Three of the covers are franked

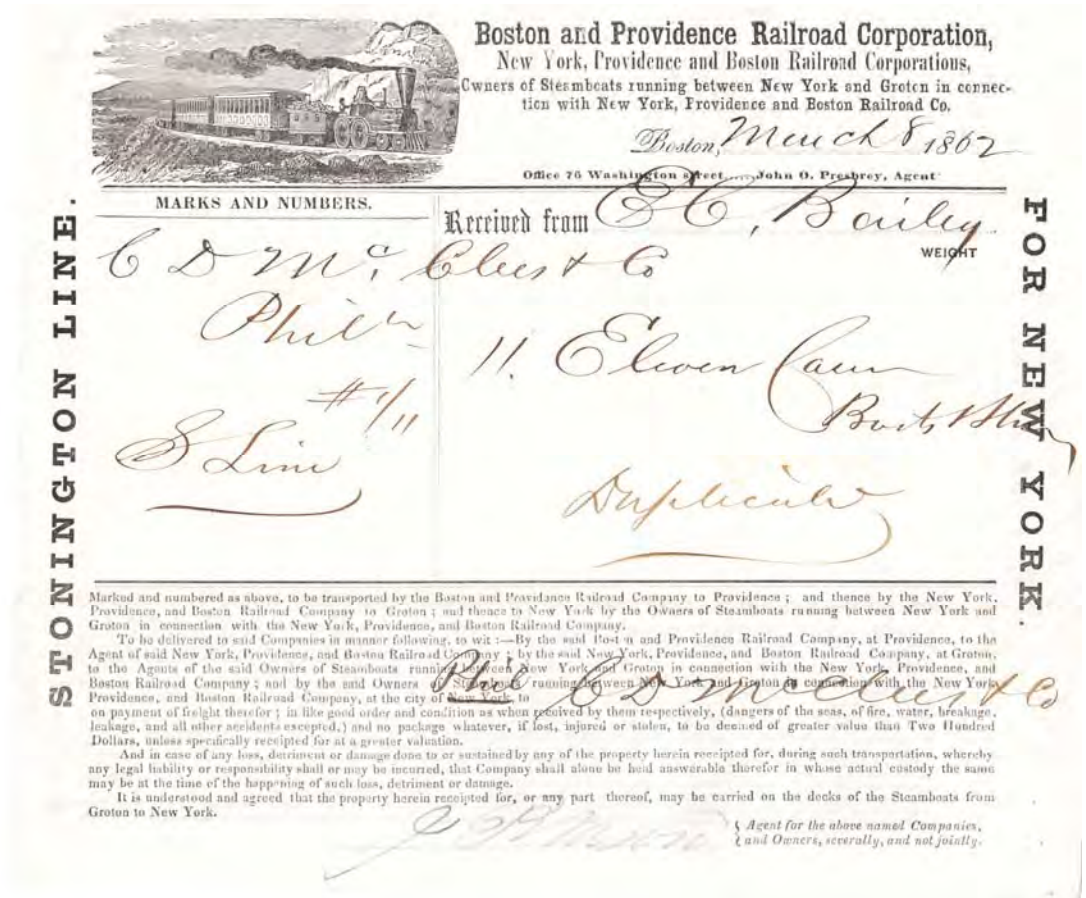


Figure 2. The stock image used on Type B propaganda envelopes is the same as on this bill of lading, shown reduced in size (author's collection).

with 3¢ 1861 issue stamps, issued after the Chorpenning route was eliminated, and replaced with the Central Overland Route (of course the covers did go via Placerville and Salt Lake, just using a different carrier). Another cover has the directional endorsement “Per Overland Mail Stage, Via Placerville” lined-out and instead has a handwritten endorsement of “Overland Mail via Los Angeles.”

Similarly, there are six covers with design Type B-3 of which three may have travelled on the Chorpenning route. One of the covers is franked with a 3¢ 1861 stamp, again indicating that it was sent after the Chorpenning route was replaced by the Central Overland Route. Additionally, two of the covers have the directional endorsement partially stricken. On two of these covers the sender left the text “Per Overland Mail” intact but struck out the portion of the endorsement reading “via Placerville and Salt Lake. Hurrah! But we must have the 🐾” thus, converting the envelope to a request for carriage on the Butterfield Southern Overland Mail.

There are three covers with design Type D-1 endorsed for the Chorpenning route, and one of the covers is a double-rate cover with the second stamp completely covering the directional endorsement. Without a visible endorsement, the cover was probably sent by the default routing, and not by the Chorpenning route. Additionally, one cover each with design Types E-2 and F-2 exist with Chorpenning route directional endorsements. Thus, there appear to be just nine railroad propaganda covers endorsed and carried on the Chorpenning route.

As noted above, there are 65 railroad propaganda covers recorded in this census. Based on this, the railroad propaganda covers are roughly twice as scarce as the miner’s illustrated envelopes recorded by Kutz. <sup>(6)</sup> He records 32 designs (not accounting for different printers’ imprints) with a total of 126 covers, compared to 20 designs with 65 total covers in this census. The most common mining illustrated cover in the Kutz census is the “Mining Scene” design published by J.M. Hutchings, with 27 examples recorded. This is nearly three times more common than design Type C-1, the most common railroad propaganda cover, with 10 copies recorded.

The printers of some of the railroad propaganda covers can be identified by their imprints. However, the printers for a number of the design types are unknown. The printer Hutchings and Rosenfield was responsible for more than one-third (23 of 65) of the surviving covers. The firm produced railroad propaganda envelopes using design types A, B (three directional endorsement varieties), and D.

James Mason Hutchings was a gold-rush emigrant from England. He produced several miner illustrated envelopes and illustrated letter sheets during the early 1850s. His printed designs included “Rocking The Cradle,” “Prospectors,” “The Expressman,” “Mining Scene,” and “The California Escutcheon” illustrated envelopes. In 1855, Hutchings began a partnership with Anton Rosenfield that produced a wide range of printed matter, including *Hutchings’ Illustrated California Magazine*. <sup>(7)</sup>


This listing is a first attempt at cataloging the different designs of the railroad propaganda covers. Hopefully, it will prove useful to other collectors in determining the relative scarcity of these covers.

### **References and Endnotes:**

- 1.) *Western Express*, Vol. 65, No. 4, Whole No. 258 (December, 2015) inside back cover.
- 2.) Coburn, Jesse L., *Letters of Gold: California Postal History Through 1869*, (Canton, Ohio: U.S. Philatelic Classics Society, Inc., 1984), pp 281-83.
- 3.) <http://www.loc.gov/pictures/item/2004671665/>
- 4.) [https://en.m.wikipedia.org/wiki/Haycock\\_boiler#Coppernob](https://en.m.wikipedia.org/wiki/Haycock_boiler#Coppernob)
- 5.) The only recorded example of the Putt’s satirical envelope is cut-down such that no routing information is evident, and the number of endorsements add to 59 rather than 60.
- 6.) Kutz, Kenneth J., *Gold Fever*, (Westminster Station, Vermont: Green Mountain Press, 1987) pp 57-72.
- 7.) Huntly-Smith, Jen A., ‘*Such is Change in California*’: *James Mason Hutchings and the Print Metropolis: 1854-1862*, Proceedings of the American Antiquarian Society, Vol. 114, Part 1 (2004) p. 37.

∞§∞§∞§∞§∞



Figure 3. Design Type A-1. “BY THE OVERLAND MAIL STAGE VIA LOS ANGELES! HURRAH! But we must have the ” text to right of image. (courtesy Robert A. Siegel Auction Galleries, Inc., hereafter “RAS”)

| <u>Postmark</u> | <u>Origin</u>    | <u>Addressee</u>           | <u>Location</u> | <u>Postage</u> | <u>Source</u>                   |
|-----------------|------------------|----------------------------|-----------------|----------------|---------------------------------|
| Feb. 25, 1862   | Georgetown, Cal. | R. Emerell Carpenter, Esq. | Ft. Dodge, Iowa | #35            | RAS 1063, lot 1809              |
| Feb. 25, 1862   | Georgetown, Cal. | C. C. Carpenter, Esq.      | Ft. Dodge, Iowa | #68            | RAS 830, lot 912                |
| Aug. 11         | Petaluma, Cal.   | Thomas Knight (?)          | Piedmont, Va.   | #35            | R. Frajola Feb. 2015 price list |



Figure 4. Design Type A-2. “PER OVERLAND MAIL, VIA LOS ANGELES.” text above and below image.

| <u>Postmark</u> | <u>Origin</u>       | <u>Addressee</u>  | <u>Location</u> | <u>Postage</u> | <u>Source</u>    |
|-----------------|---------------------|-------------------|-----------------|----------------|------------------|
| May 22, 1859    | San Francisco, Cal. | Miss Lucy Judge   | Tucaloosa, Ala. | #33 due 10¢    | DFK 663 lot 1140 |
| May xx, 1859    | San Francisco, Cal. | Mrs. B. R. Nisbet | St. Louis, Mo.  | Franking       | eBay             |

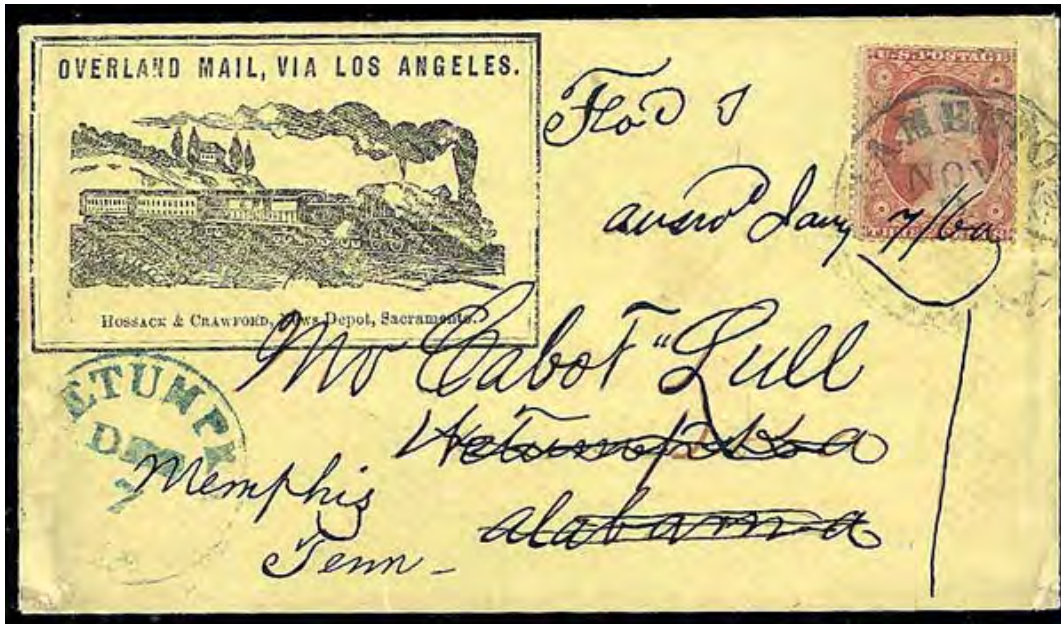


Figure 5. Design Type A-3. “OVERLAND MAIL, VIA LOS ANGELES.” text above image, with “Hossack & Crawford, News Depot, Sacramento” text below image. (courtesy Schuyler Rumsey Philatelic Auctions, Inc., hereafter “SRPA”)

| <u>Postmark</u> | <u>Origin</u>         | <u>Addressee</u>   | <u>Location</u>                                | <u>Postage</u> | <u>Source</u>                |
|-----------------|-----------------------|--------------------|--|----------------|------------------------------|
| Nov. 3, 1859    | Sacramento City, Cal. | Mr. Cabot Lull (?) | Wetumpka, Ala forward-<br>ed to Memphis, Tenn. | #26            | Rumsey sale #52, lot 957     |
| May 24, 1860    | Sacramento City, Cal. | Mrs. Sally Davis   | King’s Ferry, NY                               | #35            | Spink 121 (Risvold), lot 613 |
| May 26, 1860    | Sacramento City, Cal. | Mr. P. M. Billing  | Brooklyn, NY                                   | #35            | Haas covers, WCS webpage     |



Figure 6. Design Type A-4. “PER OVERLAND MAIL STAGE, VIA LOS ANGELES. IN HOPE OF THE” text above image (Note: “IN HOPE OF THE” is in all caps). (RAS)

| <u>Postmark</u> | <u>Origin</u>       | <u>Addressee</u>   | <u>Location</u> | <u>Postage</u> | <u>Source</u>            |
|-----------------|---------------------|--------------------|-----------------|----------------|--------------------------|
| July 22, 1859   | San Francisco, Cal. | Mrs. E. S. Gleason | Defiance, Ohio  | #31            | Haas covers, WCS webpage |
| Aug. 26, 1859   | San Francisco, Cal. | Mrs. E. S. Gleason | Defiance, Ohio  | #33            | RAS 679, lot 160         |
| Dec. 23, 1859   | San Francisco, Cal. | Miss A.C. Woodward | Lowell, Mass.   | #35            | RAS 970, lot 97          |



Figure 7 Design Type A-5. “PER OVERLAND MAIL STAGE, VIA PLACERVILLE. In hope of the” text above image, with “Published by E. B. Davidson, Bookseller, 4th St., Sacramento.” text below image. (RAS)

| <u>Postmark</u> | <u>Origin</u>         | <u>Addressee</u>    | <u>Location</u>      | <u>Postage</u> | <u>Source</u>     |
|-----------------|-----------------------|---------------------|----------------------|----------------|-------------------|
| Sept. 20, 1859  | Sacramento City, Cal. | Mr. Henry Cronkhite | Liverpool, NY        | #35            | RAS 970 lot 100   |
| Jan. 20         | Little York, Cal.     | Miss Lydia A. Pirce | Johnstown, RI        | #65            | RAS 526 lot 46    |
| Mar. 5          | Sacramento City, Cal. | Wm. B. Hawley Jr.   | New Fairfield, Conn. | #65 x 2        | Rumsey 20 lot 72  |
| Jun. 12         | Little York, Cal.     | Miss Lydia A. Pirce | Johnstown, RI        | #65            | RAS 875 lot 848   |
| Oct. 10         | Little York, Cal.     | Miss Lydia A. Pirce | Johnstown, RI        | #14            | Rumsey 60 lot 776 |
| indistinct      | Sacramento City, Cal. | Mrs. Elisa Gillette | Hartford, Ct.        | #35 ADVERTISED | Perlman scans     |



**Figure 8. Design Type A-6. “PER OVERLAND MAIL STAGE, VIA LOS ANGELES. In hope of the” text above image, with “Published by Hutchings & Rosenfield, 146 Montgomery St.” text below image. (RAS)**

| <u>Postmark</u> | <u>Origin</u>       | <u>Addressee</u>       | <u>Location</u>            | <u>Postage</u>        | <u>Source</u>                         |
|-----------------|---------------------|------------------------|----------------------------|-----------------------|---------------------------------------|
| Nov. 21, 1859   | San Francisco, Cal. | Master Willie Williams | Lakeville, Conn.           | #35                   | PFC #304760                           |
| ? 27, 1859      | San Francisco, Cal. | Miss Nellie Merrill    | New York, NY               | 10¢ '57               | <i>Western Express</i> Jan. 1988 p 14 |
| Feb. 17, 1860   | San Francisco, Cal. | Steffens (?)           | Stade, Prussia             | #35 x 3               | RAS 831, lot 2111                     |
| Apr. 2?         | San Francisco, Cal. | Miss Annie Sherwood    | New York, NY               | #35                   | Lichtenstein, Lot 174                 |
| May 27          | Camposecco, Cal.    | Mrs. Gilbert Bates     | North Abington, Mass.      | #32                   | RAS 870 ,lot 933                      |
| Sept. 4         | Forbestown, Cal.    | Miss L__ M. Ebersole   | North Hampton, Ohio        | #35                   | Philamercury #21343                   |
| indistinct      | Alameda, Cal.       | Mrs. Amy A. Peck (?)   | Diamond Hill, Rhode Island | #24 (3 # 26 replaced) | RAS 764, lot 2029                     |
| Jan. 4, 1862    | San Francisco, Cal. | Ms. Almira R. Wells    | West Cambridge, Mass.      | #68                   | PFC #210683                           |



Figure 9. Design Type B-1. “PER OVERLAND MAIL, VIA LOS ANGELES. In hope of the” text at right (“Per Overland Mail” in Old English typeface) with “Published by Hutchings & Rosenfield” text below design. (SRPA)

| <u>Postmark</u> | <u>Origin</u> | <u>Addressee</u>   | <u>Location</u> | <u>Postage</u> | <u>Source</u>      |
|-----------------|---------------|--------------------|-----------------|----------------|--------------------|
| Mar. 8          | Benicia, Cal. | Mrs. J. W. Sanborn | Neponset, Mass. | #35            | RAS 679, lot 159   |
| Mar. x4         | Benicia, Cal. | Miss E. M. Sanborn | Neponset, Mass. | #35            | Knapp, Lot 187     |
| Mar. 27         | Benicia, Cal. | Mrs. J. W. Sanborn | Neponset, Mass. | #35            | Rumsey 20, lot 249 |



Figure 10. Design Type B-2. “BY THE OVERLAND MAIL STAGE, VIA LOS ANGELES! HURRAH! But we must have the”, text at right, with “Published by Hutchings & Rosenfield, 146 Montgomery St.” text below design. (RAS)

| <u>Postmark</u> | <u>Origin</u>       | <u>Addressee</u>       | <u>Location</u> | <u>Postage</u>  | <u>Source</u>         |
|-----------------|---------------------|------------------------|-----------------|-----------------|-----------------------|
| Dec. 1, 1860    | San Francisco, Cal. | Miss Jeannie B. G_____ | Decatur, Ill.   | #26             | Letters of Gold p.284 |
|                 | San Andreas, Cal.   | ?                      | Lena, Ill.      | ms Paid 10 cts. | RAS 283, lot 54       |

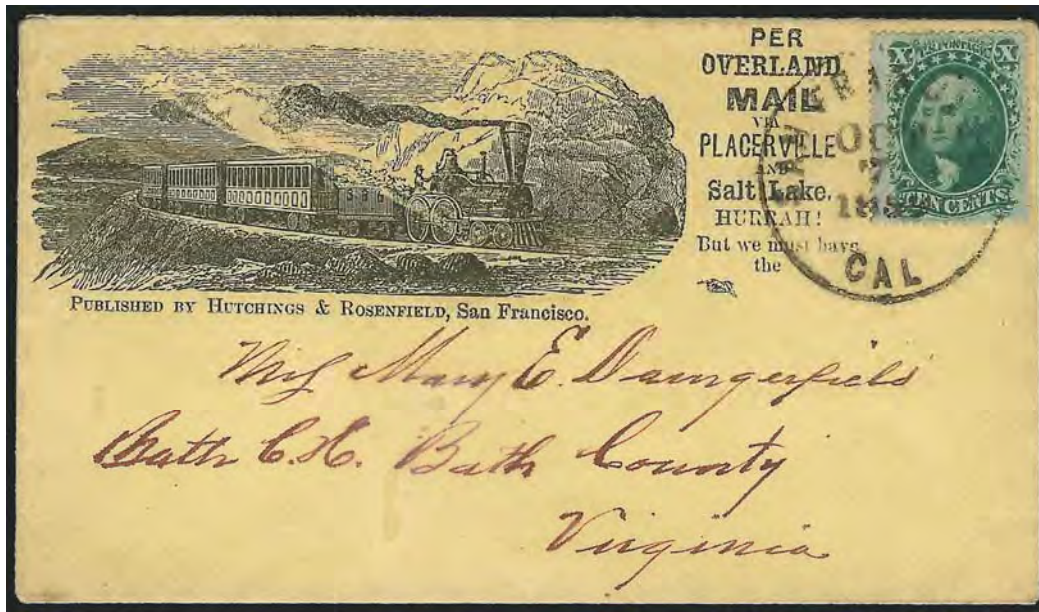



Figure 11. Design Type B-3. “PER OVERLAND MAIL VIA PLACERVILLE AND SALT LAKE. HURRAH! But we must have the 

| Postmark     | Origin              | Addressee                | Location             | Postage    | Source                   |
|--------------|---------------------|--------------------------|----------------------|------------|--------------------------|
| Oct. 7, 1859 | San Francisco, Cal. | Mrs. Mary E. Dangerfield | Bath Courthouse, Va. | #35        | RAS 970, lot 102         |
| Apr. 8, 1860 | Camptonville, Cal.  | Ehen Berry, Esq.         | Burnham, Me.         | #35        | RAS 1109, lot 548        |
| Dec 26, 1860 | Nevada City, Cal.   | Peter Hane, Jr.          | Ohio, NY             | HS PAID 10 | Haas covers, WCS webpage |
| Feb 18, 1864 | Camptonville, Cal.  | Miss Hannah Blanchard    | Skowhegan, Me.       | #65        | RAS 526, lot 45          |
| Feb. 14      | Mormon Island, Cal. | Mr. Jabez Merchant, Jr.  | West Pownal, Me.     | HS PAID 10 | Knapp, lot 183           |
| Mar.2        | Opherville, Cal.    | N. H. Cady, Esq.         | Shakopee, Minn.      | #31        | Lichtenstein, lot 158    |



Figure 12. Design Type B-4. “The Humbug Railroad.” Putt’s satirical propaganda envelope with text to the left of image. (RAS)

| Postmark | Origin           | Addressee       | Location | Postage  | Source          |
|----------|------------------|-----------------|----------|----------|-----------------|
| Apr. 11  | Sacramento, Cal. | Mr. C. S. Wr___ | Rose___  | No stamp | RAS 526, lot 32 |

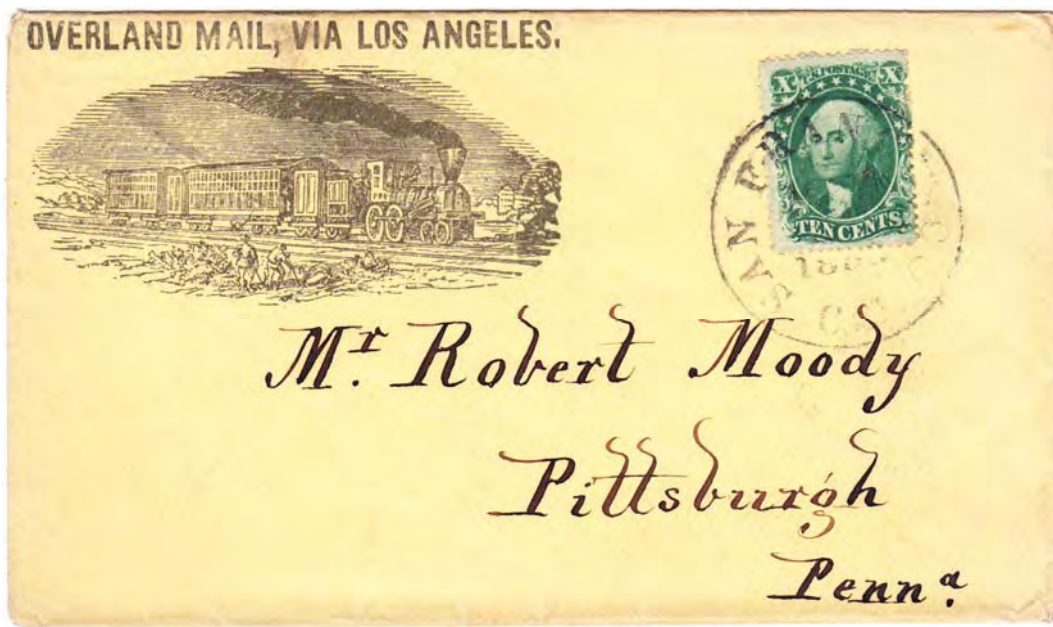


Figure 13. Design Type C-1. “OVERLAND MAIL, VIA LOS ANGELES” text above design.

| <u>Postmark</u> | <u>Origin</u>       | <u>Addressee</u>          | <u>Location</u>                                       | <u>Postage</u>                             | <u>Source</u>            |
|-----------------|---------------------|---------------------------|---|--|--------------------------|
| May 9, 1859     | San Francisco, Cal. | Mr. J. C. Johnson         | Newark, NJ  | #31 x 2                                    | RAS 970, lot 96          |
| June 20, 1859   | San Francisco, Cal. | Hon. Reuben Wood          | Rockport, Ohio  | #32  | Rumsey 24, lot 20        |
| June 20, 1859   | San Francisco, Cal. | Miss ? L. Spencer         | Sun Prairie, Wis.,<br>forwarded to<br>Cleveland, Ohio | #26, due 7¢,<br>due add'l 3¢<br>forwarding | Rumsey 63, lot 1030      |
| July 11, 1859   | San Francisco, Cal. | Mr. W.B. Berry            | Stowe, Mass.  | #32 x 2                                    | RAS 1025, lot 92         |
| July 22, 1859   | San Francisco, Cal. | Mrs. Mary Wood            | Cleveland, Ohio                                       | #32  | RAS 724, lot 86          |
| Aug. 10, 1859   | San Francisco, Cal. | Mrs. Seabury L. Mastrik   | Rockport, Ohio  | #35  | Haas covers, WCS webpage |
| Sept. 26, 1859  | San Francisco, Cal. | J.W. Ricardson, Esq.      | Boston, Mass.   | #35  | Philamercury #21924      |
| Oct. 22, 1859   | San Francisco, Cal. | Mrs. Mary Ann Kuidnidt(?) | Brunswick, Me.  | #35  | RAS 1106, lot 3067       |
| May 1860        | San Francisco, Cal. | Mr. Robert Moody          | Pittsburgh, Penn.                                     | #32  | Figure 13                |
| unused          | unused              | unused                    | unused  | unused                                     | Item #289 at             |

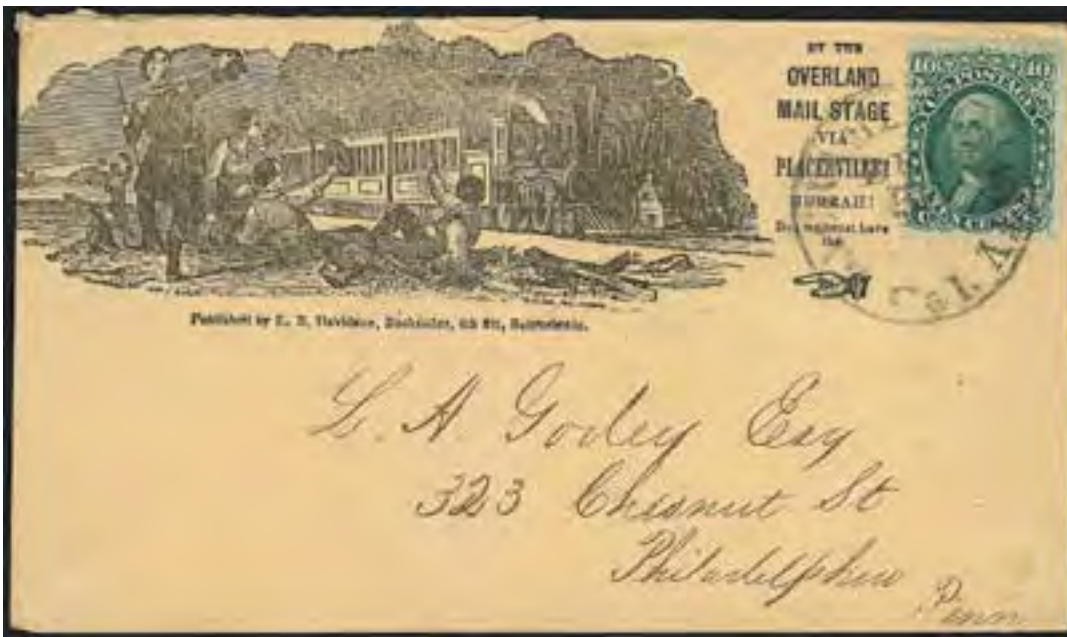
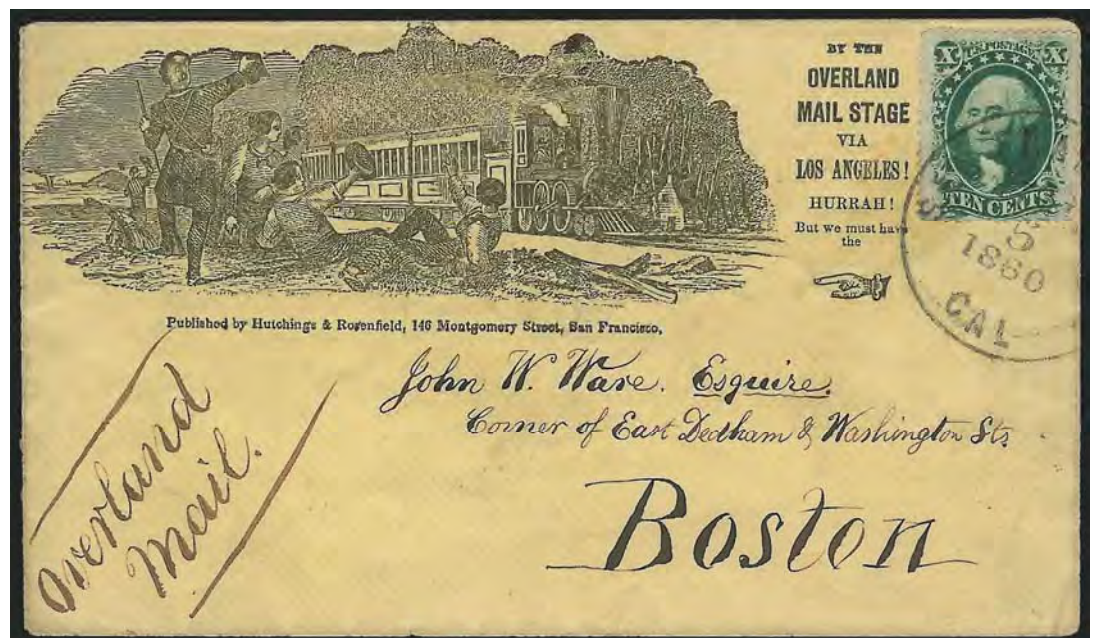


Figure 14. Design Type D-1. “BY THE OVERLAND MAIL STAGE VIA PLACERVILLE! HURRAH! But we must have the 🐻”, text at right, with “Published by E. B. Davidson, Bookseller, 4th St., Sacramento.” text beneath design. (RAS)

| Postmark      | Origin                | Addressee               | Location            | Postage     | Source                      |
|---------------|-----------------------|-------------------------|---------------------|-------------|-----------------------------|
| Aug. 27, 1859 | Diamond Springs, Cal. | Mr. Herman Brunson (?)  | Mount Vernon,       | #35 & #26x2 | Wolffers sale June 24, 1989 |
| Oct. 4, 1859* | Sacramento City, Cal. | Henry Willens, M.D. (?) | New York, NY        | #35 x 2     | RAS 896, lot 563            |
| Dec. 5        | Sacramento City, Cal. | L.A. Godey Esq.         | Philadelphia, Penn. | #68         | RAS 831, lot 2268           |

\*one of the stamps is on top of the directional endorsement, presumably it is via Placerville; however, the lot description states via Los Angeles, an otherwise unknown design.

Figure 15. Design Type D-2. “BY THE OVERLAND MAIL STAGE VIA LOS ANGELES! HURRAH! But we must have the 🐻”, text at right, with “Published by Hutchings & Rosenfield, 146 Montgomery Street, San Francisco.” below design. (RAS)



| Postmark     | Origin              | Addressee          | Location      | Postage | Source            |
|--------------|---------------------|--------------------|---------------|---------|-------------------|
| Mar. 5, 1860 | San Francisco, Cal. | John W. Ware, Esq. | Boston, Mass. | #35     | RAS 970, lot 95   |
| Jan. 10      | Brooklyn, Cal.      | Noah Cochran, Esq. | Peru, NY      | #35     | Rumsey 45, lot 94 |
| Apr. 9       | Marysville, Cal.    | Col. Hiram Chase   | Belfast, Me.  | #35     | RAS 830, lot 909  |
| May 13       | Brooklyn, Cal.      | Noah Cochran       | Peru, NY      | None    | Knapp, lot 186    |



Figure 16. Design Type E-1. “PER OVERLAND MAIL STAGE, VIA LOS ANGELES, IN HOPE OF THE”, text above image (“VIA LOS ANGELES” in italic font), with “Published by H. J. Bidleman, one door North of Post Office, Sacramento.” below image. (SRPA)

| <u>Postmark</u> | <u>Origin</u>         | <u>Addressee</u> | <u>Location</u>   | <u>Postage</u> | <u>Source</u>     |
|-----------------|-----------------------|------------------|-------------------|----------------|-------------------|
| Dec. 5, 1859    | Sacramento City, Cal. | Mr. Leland Slade | Kelloggsville, NY | #35            | Rumsey 20, lot 65 |

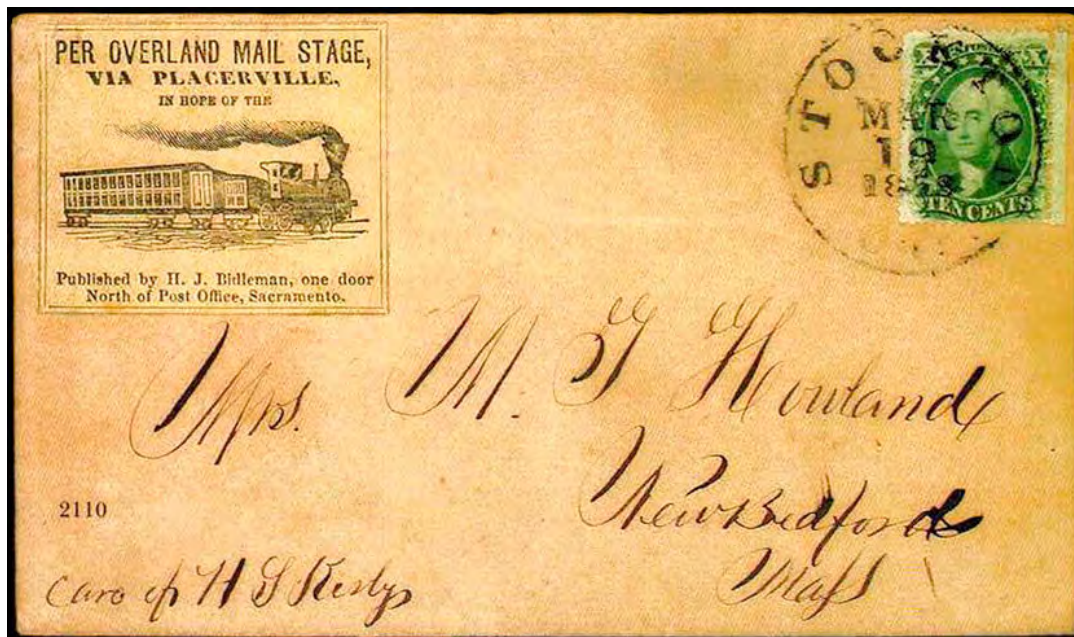


Figure 17. Design Type E-2. “PER OVERLAND MAIL STAGE, VIA PLACERVILLE, IN HOPE OF THE”, text above image (“VIA PLACERVILLE” in italic font), with “Published by H. J. Bidleman, one door North of Post Office, Sacramento.” below image. (RAS)

| <u>Postmark</u> | <u>Origin</u>  | <u>Addressee</u>  | <u>Location</u>    | <u>Postage</u> | <u>Source</u>     |
|-----------------|----------------|-------------------|--------------------|----------------|-------------------|
| Mar. 19, 1859   | Stockton, Cal. | Mrs. M.J. Howland | New Bedford, Mass. | #33            | RAS 784, lot 2110 |

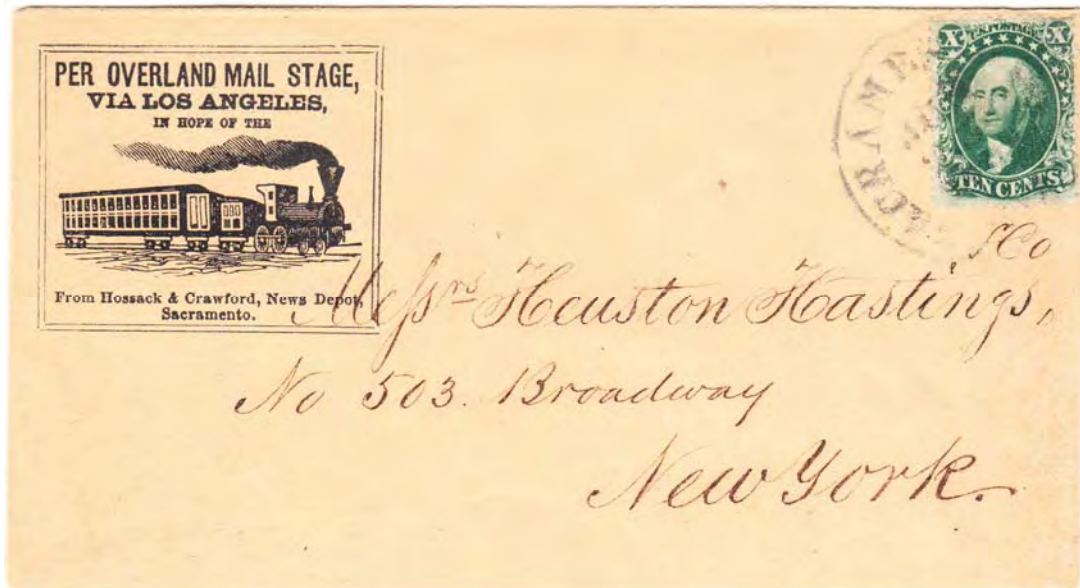


Figure 18. Design Type E-3. “PER OVERLAND MAIL STAGE, VIA LOS ANGELES, IN HOPE OF THE”, text above image (“VIA LOS ANGELES” in bold Roman font), with “From Hossack & Crawford, News Depot, Sacramento.” below image.

| <u>Postmark</u> | <u>Origin</u>         | <u>Addressee</u>        | <u>Location</u> | <u>Postage</u> | <u>Source</u>   |
|-----------------|-----------------------|-------------------------|-----------------|----------------|-----------------|
| Jun. 20 (1859)? | Sacramento City, Cal. | Messrs Houston Hastings | New York, NY    | #33            | DFK 674, lot 17 |



Figure 19. Design Type F-1. “PER OVERLAND MAIL STAGE, VIA LOS ANGELES, IN HOPE OF THE”, text above image. (RAS)

| <u>Postmark</u> | <u>Origin</u>       | <u>Addressee</u>      | <u>Location</u> | <u>Postage</u> | <u>Source</u>   |
|-----------------|---------------------|-----------------------|-----------------|----------------|-----------------|
| Sept. 23, 1859  | San Francisco, Cal. | Mr. Daniel H. Felton  | Danvers, Mass.  | #35            | RAS 973, lot 52 |
| Oct. 10, 1859   | San Francisco, Cal. | Mr. Samuel R. Shepard | Amesbury, Mass. | #35            | RAS 970, lot 94 |



Figure 20. Design Type G-1. “Overland, via PLACERVILLE”, text above image, with “Published by JULIUS JACOBS, Post Office Literary Depot, FOLSOM, Cal.” below train design. (RAS)

| <u>Postmark</u> | <u>Origin</u>     | <u>Addressee</u>   | <u>Location</u> | <u>Postage</u> | <u>Source</u>    |
|-----------------|-------------------|--------------------|-----------------|----------------|------------------|
| June 14         | Folsom City, Cal. | Mrs. J.W. Bancroft | Marshall, Mich. | #33            | RAS 970, lot 101 |



Figure 21. Design Type H-1. “OVERLAND MAIL, VIA LOS ANGELES.”, text above image. (RAS)

| <u>Postmark</u> | <u>Origin</u>                               | <u>Addressee</u> | <u>Location</u>    | <u>Postage</u> | <u>Source</u>   |
|-----------------|---|------------------|--------------------|----------------|-----------------|
| Nov. 18, 1859   | San Francisco, Cal.                         | Mr. J. Williams  | Lakeville, Conn.   | #35            | HRH 3009, lot   |
| Dec. 26, 1859   | San Francisco, Cal.                         | Theo J. Williams | Stockbridge, Mass. | #35            | RAS 970, lot 98 |
| Dec. 26, 1859   | San Francisco, Cal.<br>(Victoria BC origin) | Mr. J. Williams  | Lakeville, Conn.   | #35            | RAS 788, lot 87 |



Figure 22. Design Type I-1. “Per Overland Mail, via Los Angeles.”, text above image, with “Sold by McNeil & Dudley, 1st Street, Napa City.” beneath image. (RAS)

| <u>Postmark</u> | <u>Origin</u>   | <u>Addressee</u>      | <u>Location</u> | <u>Postage</u>  | <u>Source</u>           |
|-----------------|-----------------|-----------------------|-----------------|-----------------|-------------------------|
| Feb. 1, 1860    | Napa City, Cal. | Gilbert J. Rockwell   | Denny, Ill.     | #26 ms<br>due 7 | Hugh Feldman<br>exhibit |
| Feb. 18         | Napa City, Cal. | Miss Katie E. Chaffee | Rutland, Vt.    | #35             | RAS 970, lot 99         |



**www.PhilaMercury.com**

An online image and description database for United States covers that is free, open-access, and non-commercial. Collectors and dealers can upload images and add to the fully searchable postal history database. It can be used for research, as an imaged record of a collection, or to list covers available for purchase. Please list your Western Express covers.

# Table I - Census of Railroad Propaganda Covers

*Compiled by David D'Alessandris (February, 2016)*

| <u>Type</u> | <u>Postmark</u> | <u>Origin</u>         | <u>Addressee</u>           | <u>Location</u>                                 | <u>Postage</u>           | <u>Source</u>                        |
|-------------|-----------------|-----------------------|----------------------------|---|--------------------------|--------------------------------------|
| A-1         | Feb. 25, 1862   | Georgetown, Cal.      | R. Emerell Carpenter, Esq. | Ft. Dodge, Iowa                                 | #35                      | RAS 1063, lot 1809                   |
| A-1         | Feb. 25, 1862   | Georgetown, Cal.      | C. C. Carpenter, Esq.      | Ft. Dodge, Iowa                                 | #68                      | RAS 830, lot 912                     |
| A-1         | Aug. 11         | Petaluma, Cal.        | Thomas Knight (?)          | Piedmont, Va.                                   | #35                      | R. Frajola Feb. 2015 price list      |
| A-2         | May 22, 1859    | San Francisco, Cal.   | Miss Lucy Judge            | Tucaloosa, Ala.                                 | #33 due 10¢              | DFK 663 lot 1140                     |
| A-2         | May xx, 1859    | San Francisco, Cal.   | Mrs. B. R. Nisbet          | St. Louis, Mo.                                  | Franking re-<br>moved    | eBay #262453912705                   |
| A-3         | Nov. 3, 1859    | Sacramento City, Cal. | Mr. Cabot Lull (?)         | Wetumpka, Ala<br>forwarded to<br>Memphis, Tenn. | #26                      | Rumsey sale #52, lot 957             |
| A-3         | May 24, 1860    | Sacramento City, Cal. | Mrs. Sally Davis           | King's Ferry, NY                                | #35                      | Spink 121 (Risvold), lot 613         |
| A-3         | May 26, 1860    | Sacramento City, Cal. | Mr. P. M. Billing          | Brooklyn, NY                                    | #35                      | Haas covers, WCS webpage             |
| A-4         | July 22, 1859   | San Francisco, Cal.   | Mrs. E. S. Gleason         | Defiance, Ohio                                  | #31                      | Haas covers, WCS webpage             |
| A-4         | Aug. 26, 1859   | San Francisco, Cal.   | Mrs. E. S. Gleason         | Defiance, Ohio                                  | #33                      | RAS 679, lot 160                     |
| A-4         | Dec. 23, 1859   | San Francisco, Cal.   | Miss A.C. Woodward         | Lowell, Mass.                                   | #35                      | RAS 970, lot 97                      |
| A-5         | Sept. 20, 1859  | Sacramento City, Cal. | Mr. Henry Cronkhite        | Liverpool, NY                                   | #35                      | RAS 970 lot 100                      |
| A-5         | Jan. 20         | Little York, Cal.     | Miss Lydia A. Pirce        | Johnstown, RI                                   | #65                      | RAS 526 lot 46                       |
| A-5         | Mar. 5          | Sacramento City, Cal. | Wm. B. Hawley Jr.          | New Fairfield,<br>Conn.                         | #65 x 2                  | Rumsey 20 lot 72                     |
| A-5         | Jun. 12         | Little York, Cal.     | Miss Lydia A. Pirce        | Johnstown, RI                                   | #65                      | RAS 875 lot 848                      |
| A-5         | Oct. 10         | Little York, Cal.     | Miss Lydia A. Pirce        | Johnstown, RI                                   | #14                      | Rumsey 60 lot 776                    |
| A-5         | indistinct      | Sacramento City, Cal. | Mrs. Elisa Gillette        | Hartford, Ct.                                   | #35<br>ADVERTISED        | Perlman scans                        |
| A-6         | Nov. 21, 1859   | San Francisco, Cal.   | Master Willie Williams     | Lakeville, Conn.                                | #35                      | PFC #304760                          |
| A-6         | ? 27, 1859      | San Francisco, Cal.   | Miss Nellie Merrill        | New York, NY                                    | 10¢ '57                  | <i>Western Express</i> Jan 1988 p 14 |
| A-6         | Feb. 17, 1860   | San Francisco, Cal.   | Steffens (?)               | Stade, Prussia                                  | #35 x 3                  | RAS 831, lot 2111                    |
| A-6         | Apr. 2?         | San Francisco, Cal.   | Miss Annie Sherwood        | New York, NY                                    | #35                      | Lichtenstein, Lot 174                |
| A-6         | May 27          | Camposecco, Cal.      | Mrs. Gilbert Bates         | North Abington,<br>Mass.                        | #32                      | RAS 870 ,lot 933                     |
| A-6         | Sept. 4         | Forbestown, Cal.      | Miss L__ M. Ebersole       | North Hampton,<br>Ohio                          | #35                      | Philamercury #21343                  |
| A-6         | indistinct      | Alameda, Cal.         | Mrs. Amy A. Peck (?)       | Diamond Hill,<br>Rhode Island                   | #24 (3 # 26<br>replaced) | RAS 764, lot 2029                    |
| A-6         | Jan. 4, 1862    | San Francisco, Cal.   | Ms. Almira R. Wells        | West Cambridge,<br>Mass.                        | #68                      | PFC #210683                          |
| B-1         | Mar. 8          | Benicia, Cal.         | Mrs. J. W. Sanborn         | Neponset, Mass.                                 | #35                      | RAS 679, lot 159                     |
| B-1         | Mar. x4         | Benicia, Cal.         | Miss E. M. Sanborn         | Neponset, Mass.                                 | #35                      | Knapp, Lot 187                       |
| B-1         | Mar. 27         | Benicia, Cal.         | Mrs. J. W. Sanborn         | Neponset, Mass.                                 | #35                      | Rumsey 20, lot 249                   |
| B-2         | Dec. 1, 1860    | San Francisco, Cal.   | Miss Jeannie B. G_____     | Decatur, Ill.                                   | #26                      | Letters of Gold p.284                |
| B-2         |                 | San Andreas, Cal.     | ?                          | Lena, Ill.                                      | ms Paid 10 cts.          | RAS 283, lot 54                      |

# Table I - Census of Railroad Propaganda Covers (continued)

*Compiled by David D'Alessandris (February, 2016)*

| <u>Type</u> | <u>Postmark</u>    | <u>Origin</u>                               | <u>Addressee</u>          | <u>Location</u>                                       | <u>Postage</u>                             | <u>Source</u>  |
|-------------|--------------------|---|---------------------------|---|--|--|
| B-3         | Oct. 7, 1859       | San Francisco, Cal.                         | Mrs. Mary E. Dangerfield  | Bath Courthouse, Va.                                  | #35  | RAS 970, lot 102   |
| B-3         | Apr. 8, 1860       | Camptonville, Cal.                          | Ehen Berry, Esq.          | Burnham, Me.  | #35  | RAS 1109, lot 548  |
| B-3         | Dec 26, 1860       | Nevada City, Cal.                           | Peter Hane, Jr.           | Ohio, NY  | HS PAID 10                                 | Haas covers, WCS webpage   |
| B-3         | Feb 18, 1864       | Camptonville, Cal.                          | Miss Hannah Blanchard     | Skowhegan, Me.  | #65  | RAS 526, lot 45  |
| B-3         | Feb. 14            | Mormon Island, Cal.                         | Mr. Jabez Merchant, Jr.   | West Pownal, Me.                                      | HS PAID 10                                 | Knapp, lot 183   |
| B-3         | Mar.2              | Opherville, Cal.                            | N. H. Cady, Esq.          | Shakopee, Minn.                                       | #31  | Lichtenstein, lot 158  |
| B-4         | Apr. 11            | Sacramento, Cal.                            | Mr. C. S. Wr____          | Rose____  | No stamp                                   | RAS 526, lot 32  |
| C-1         | May 9, 1859        | San Francisco, Cal.                         | Mr. J. C. Johnson         | Newark, NJ  | #31 x 2                                    | RAS 970, lot 96  |
| C-1         | June 20, 1859      | San Francisco, Cal.                         | Hon. Reuben Wood          | Rockport, Ohio  | #32  | Rumsey 24, lot 20  |
| C-1         | June 20, 1859      | San Francisco, Cal.                         | Miss ? L. Spencer         | Sun Prairie, Wis.,<br>forwarded to<br>Cleveland, Ohio | #26, due 7¢,<br>due add'l 3¢<br>forwarding | Rumsey 63, lot 1030  |
| C-1         | July 11, 1859      | San Francisco, Cal.                         | Mr. W.B. Berry            | Stowe, Mass.  | #32 x 2                                    | RAS 1025, lot 92   |
| C-1         | July 22, 1859      | San Francisco, Cal.                         | Mrs. Mary Wood            | Cleveland, Ohio                                       | #32  | RAS 724, lot 86  |
| C-1         | Aug. 10, 1859      | San Francisco, Cal.                         | Mrs. Seabury L. Mastrik   | Rockport, Ohio  | #35  | Haas covers, WCS webpage   |
| C-1         | Sept. 26, 1859     | San Francisco, Cal.                         | J.W. Ricardson, Esq.      | Boston, Mass.   | #35  | Philamercury #21924  |
| C-1         | Oct. 22, 1859      | San Francisco, Cal.                         | Mrs. Mary Ann Kuidnidt(?) | Brunswick, Me.  | #35  | RAS 1106, lot 3067   |
| C-1         | May 1860           | San Francisco, Cal.                         | Mr. Robert Moody          | Pittsburgh, Penn.                                     | #32  | Figure 13  |
| C-1         | unused             | unused                                      | unused                    | unused  | unused                                     | Item #289 at<br><a href="http://www.goldrushpaper.com">www.goldrushpaper.com</a> |
| D-1         | Aug. 27, 1859      | Diamond Springs, Cal.                       | Mr. Herman Brunson (?)    | Mount Vernon,<br>Canada West                          | #35 & #26x2                                | Wolffers sale June 24, 1989  |
| D-1         | Oct. 4, 1859*      | Sacramento City, Cal.                       | Henry Willens, M.D. (?)   | New York, NY  | #35 x 2                                    | RAS 896, lot 563   |
| D-1         | Dec. 5             | Sacramento City, Cal.                       | L.A. Godey Esq.           | Philadelphia, Penn.                                   | #68  | RAS 831, lot 2268  |
| D-2         | Mar. 5, 1860       | San Francisco, Cal.                         | John W. Ware, Esq.        | Boston, Mass.   | #35  | RAS 970, lot 95  |
| D-2         | Jan. 10            | Brooklyn, Cal.                              | Noah Cochran, Esq.        | Peru, NY  | #35  | Rumsey 45, lot 94  |
| D-2         | Apr. 9             | Marysville, Cal.                            | Col. Hiram Chase          | Belfast, Me.  | #35  | RAS 830, lot 909   |
| D-2         | May 13             | Brooklyn, Cal.                              | Noah Cochran              | Peru, NY  | None                                       | Knapp, lot 186   |
| E-1         | Dec. 5, 1859       | Sacramento City, Cal.                       | Mr. Leland Slade          | Kellogsville, NY                                      | #35  | Rumsey 20, lot 65  |
| E-2         | Mar. 19, 1859      | Stockton, Cal.                              | Mrs. M.J. Howland         | New Bedford, Mass.                                    | #33  | RAS 784, lot 2110  |
| E-3         | Jun. 20<br>(1859)? | Sacramento City, Cal.                       | Messrs Houston Hastings   | New York, NY  | #33  | DFK 674, lot 17  |
| F-1         | Sept. 23, 1859     | San Francisco, Cal.                         | Mr. Daniel H. Felton      | Danvers, Mass.  | #35  | RAS 973, lot 52  |
| F-1         | Oct. 10, 1859      | San Francisco, Cal.                         | Mr. Samuel R. Shepard     | Amesbury, Mass.                                       | #35  | RAS 970, lot 94  |
| G-1         | June 14            | Folsom City, Cal.                           | Mrs. J.W. Bancroft        | Marshall, Mich.                                       | #33  | RAS 970, lot 101   |
| H-1         | Nov. 18, 1859      | San Francisco, Cal.                         | Mr. J. Williams           | Lakeville, Conn.                                      | #35  | HRH 3009, lot 1805   |
| H-1         | Dec. 26, 1859      | San Francisco, Cal.                         | Theo J. Williams          | Stockbridge, Mass.                                    | #35  | RAS 970, lot 98  |
| H-1         | Dec. 26, 1859      | San Francisco, Cal.<br>(Victoria BC origin) | Mr. J. Williams           | Lakeville, Conn.                                      | #35  | RAS 788, lot 87  |
| I-1         | Feb. 18            | Napa City, Cal.                             | Miss Katie E. Chaffee     | Rutland, Vt.  | #35  | RAS 970, lot 99  |
| I-1         | Feb. 1, 1860       | Napa City, Cal.                             | Gilbert J. Rockwell       | Denny, Ill.   | #26 ms due 7                               | Hugh Feldman exhibit   |

## Philatelic Bibliopole

**The Pony Express** by M. C. Nathan and W. S. Boggs, 1962, 108 pages, cloth, \$175.00

**Handstamps of Wells, Fargo & Co. 1852-1895** by J. F. Leutzinger, 1993, 382 pages, cloth, \$45.00

**Franks of Western Expresses** by Mel Nathan, 1973, 281 pages, deluxe edition, cloth, \$47.50

**Fresno and San Francisco Bicycle Post of 1894** by Lowell B. Cooper, 1983, 152 pages, cloth, \$50.00; deluxe edition of 25 copies, rag paper, 1/4 leather, slip case, \$300.00

**Nevada Express, Wells Fargo & Co., and Other Letter Expresses, 1857-1895** by James M. Gamett, 2002, 192 pages, cloth, \$45.00

**California Town Postmarks 1849-1935** by John H. Williams, 1997, 1504 pages, two volumes, cloth, without disk \$105.00, with disk \$110.00

**Nebraska Territory Postal History** by Charles W. Winter, 1999, 176 pages, cloth, 147 halftone and hundreds of line drawings, \$35.00

**U.S. Contract Mail Routes by Water (Star Routes 1824-1875)** by Hugh V. Feldman, 2008, 408 pages, cloth, limited edition. The contract water mail routes for the entire U.S.; excellent, written descriptions, maps and table. A spectacular book from the Collectors Club of Chicago, numerous maps and covers all in full color, 260 pages on detailed listing and analysis of the routes by state, 50 pages on the procedures and history, five appendices, three indexes and a gazetteer. \$75.00+ \$3 part postage in the US, for most foreign delivery \$75.00 + \$11 postage.

**Over 1000 Pages of Philatelic Literature on Line  
Books for Sale and Reference Files**

**pbbooks.com (web site) or email at: Leonard@pbbooks.net**

**Leonard H. Hartmann  
Philatelic Bibliopole  
P.O. Box 36006  
Louisville, KY 40233**

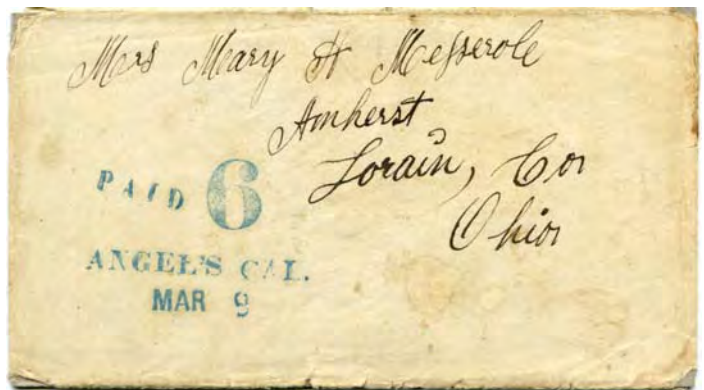
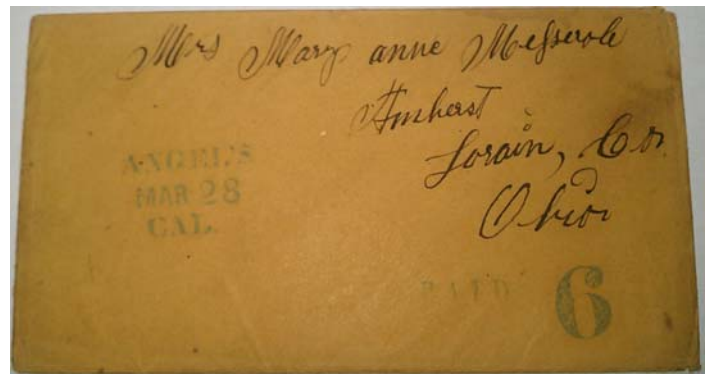
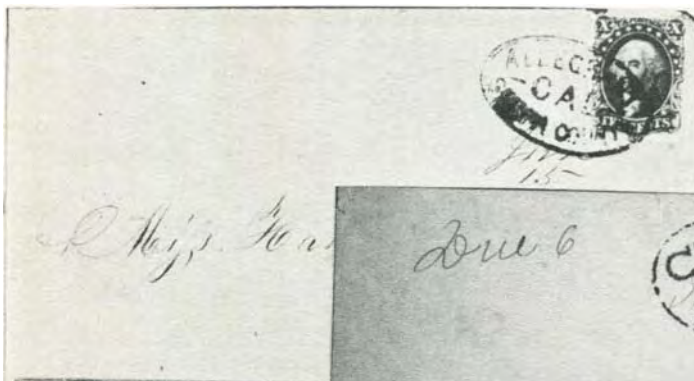


## CALIFORNIA STRAIGHT LINE, ARCH, and OVAL POSTMARKS 1849-1870

*By James W. Milgram, M.D.*

If one reads through *California Town Postmarks 1849-1935* by John H. Williams, you are struck by the fact that almost all town postmarks are circle datestamped (clds) in type. <sup>(1)</sup> There are a scattering of unusual Registered postmarks from the 1880's and later, a dozen or two straight line postmarks at different later dates, and a few county postmarks. Of course, he does not show the many manuscript types.

But I have searched this book and other sources, including auction catalogs, especially Rumsey sales, and come up with a list of about 40 unusual handstamps up to the 1869 period. <sup>(2)</sup> Nowhere is there an illustrated listing of these California fancy postmarks, so I thought it would be an interesting project. I have elected to list the covers alphabetically rather than by county, as follows:



### Alleghany, Sierra County

This marking (Figure 1A, upper above) is shown on a cover in *Letters of Gold*. A drawing is shown in Williams to document this marking (Figure 1B, lower above). It is quite a distinctive marking listed as 1858-1860.

### Angels, Calaveras County

The more common marking is a three straight line marking in blue ink (Figure 2, upper image above), "ANGEL'S/ DATE/ CAL". This same correspondence contained a manuscript marking dated in 1853. However, the two line marking shown in Figure 3 (lower image above) is a new listing. The letter dated it as 1854.



### Benicia, Solano County

The black straight line marking has been listed with dates of December 29, 1849 to May 29, 1850. The cover in Figure 4 (above) is a new cover with the same early date. It pays the 40 cent rate to the East. One of the most interesting aspects of this cover is that it has a notation "Charged P.M.C." This indicates that the due postage was charged to a box account, a very early example of this usage of a California rate. The charge account was at the receiving post office and this is an official postal marking by the postmaster. The contents of the letter are also quite interesting (with spelling in kind):

*Nappa City Dec 18th 1849*

*Der brother*

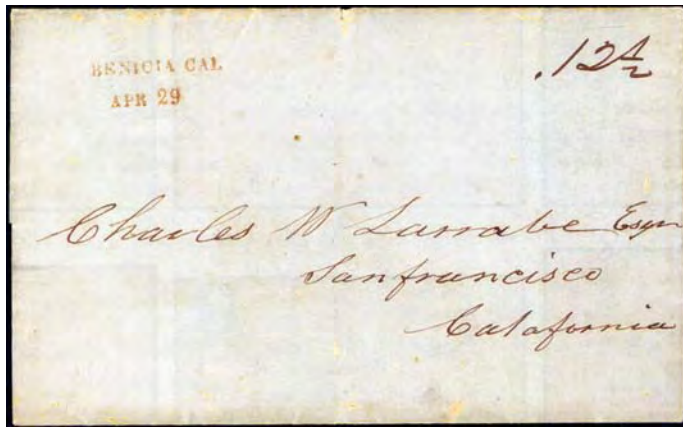
*...I am now in California and god help the man that ever started for this place. You have herd a great dell about this place, I will try to give you my opion About it. A man can make About ten dollars A day and sometimes from fifty to one hundred, but then flour is from fifty to sixty dollars per barrel beef from twenty five to fifty cents A pound and sugar one dollar A pound coffe 75 cts clothing is About five boots is worth from sixty to one hundred dollars per pare shoes from twenty five to fifty per pare and everthing else in prepotuon*

*I am under the impression that the gold fever is rainging in the states yet. All I have to say about is is that if I was in the states and was making twenty five cents A day I would stay their, all thoy it is the best place I suppose in the world to make money, but a man cant keep it at the prices that everthing is rating now, but I think that thay will be down in A short time. I havent told you nothing about the golds mind yet, I have been in them about one month and only work four day and was sick the rest of the time in the time that I worked I maid one hundred and fifty dollars the gold is here but nine men out of ten get sick when thay go in to minds, if I could keep my helth in the mines I could make a fortune.*

*This cuntry is A find one now but if the gold was taking away from it would be a poor one. I would like for you to see it I think that you would be very much pleas with it we have A plent of wild cattle in this cuntry and wild hores and wild wheat and oats and clover in the vally...plans...I think that if I have good luck I can make it [home] in two years.*

*Write as soone as thoes few lines come to hand write one leter to Sackmento City and one to Nappa City for I don't now now which one of the two places I will be in....*

*Yours Res. T. G.. Hammond*

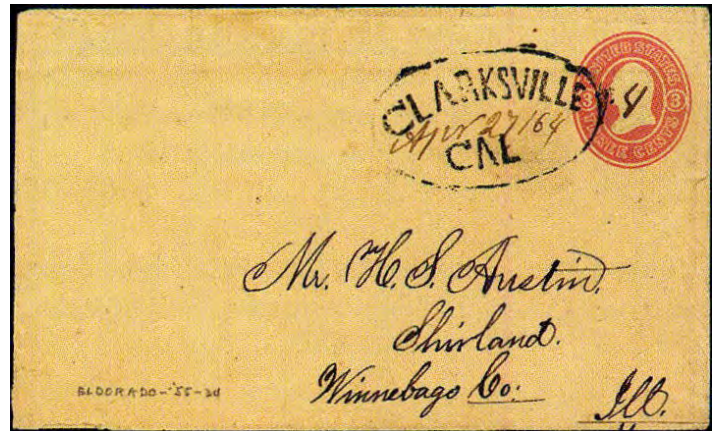


**Benicia, Solano County (continued)**

A rarer postmark is the same straight line in red ink. An example with the 12½¢ intra-California charge is shown in Figure 5 (above).

**Chico, Butte County**

A black and white illustration of a stampless cover with this oval marking is shown from Letters of Gold in Figure 7 (at the bottom of the prior column). Williams lists June 14, 1854 (the illustrated cover is June 18).



**Clarksville, El Dorado County**

Figure 8 (above) shows a fine bold oval used during the 1860's. The listed dates are Jan. 25, 1864 to May 4, 1867. This is a single rimmed oval with manuscript dating.



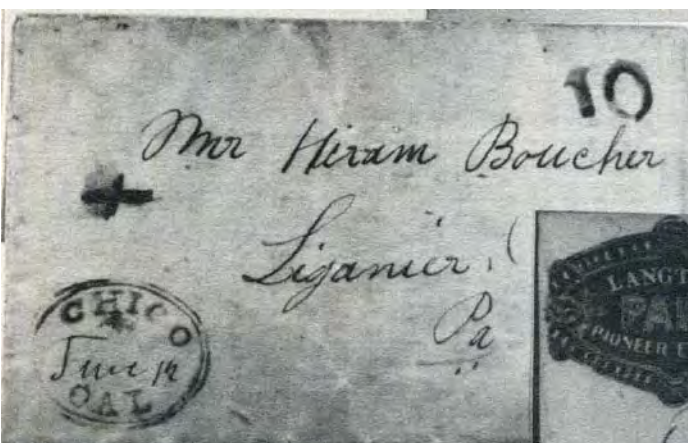
**Blue Canyon , Placer County**

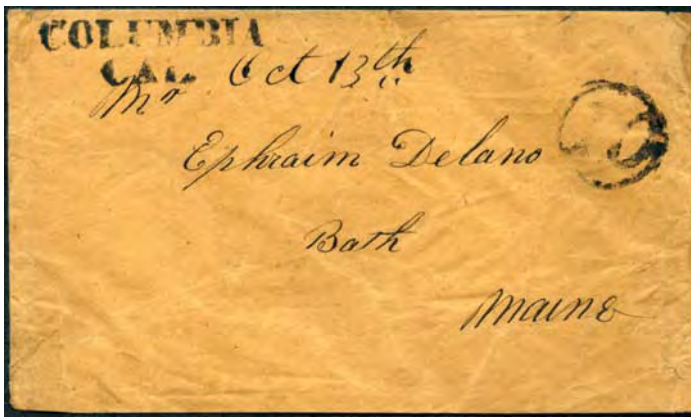
There are very few California fancy town postmarks on the 1869 issue. The cover in Figure 6 (above) dated June 14, 1870 is one example. This may be the only example on this stamp. The marking is dated as being used Jan. 26, 1874 in Williams. There is a second double-lined oval used Jul. 16, 1877 listed.



**Columbia, Tuolumne County**

There are two different straight line markings from Columbia, both rather common, but attractive. The earlier smaller one line variety, shown in Figure 9 (above), has dates of Dec. 26, 1852 to Jul. 12, 1853. The larger two line type, Figure 10 (top of next page), has usages of Aug. 28, 1853 to Jan. 12, 1854.





**Forbestown , Butte County**



Figure 11 (immediately above) shows an illustrated envelope with “MINING SCENE” on which are two 3 cent 1851 stamps and rimless oval postmark “FORBESTOWN CAL.” with manuscript dating. The listed dates are Jan. 17, 1855 to Mar. 1, 1856.



**Greenwood, El Dorado County**

This marking is a curved upper portion and a horizontal lower portion hence an arch (Figure 12, above). The illustrated cover shows a 10 cent prepaid rate after the 10 cent rate was instituted with stamps paying the transcontinental postage. The marking was used for three years between May, 1853 and May, 1856.



**Hicksville, Sacramento County**

This rare double oval used in 1862-1865 is shown in Figure 13 (above) on a patriotic cover WP-8A by my classification which bears five 3 cent 1857 stamps paying a fifteen cent rate to Quebec. Like the Clarksville marking, it is a very bold large oval.

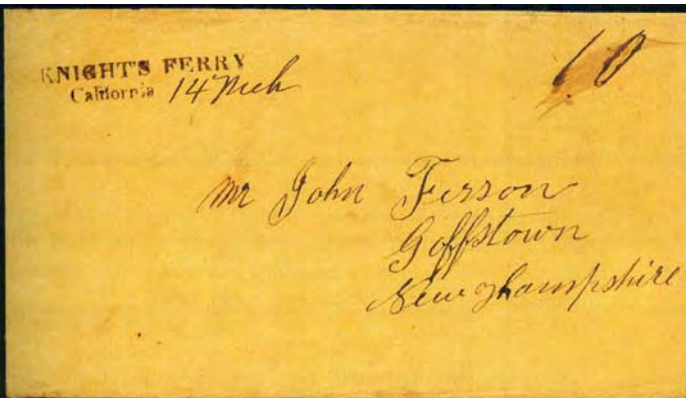
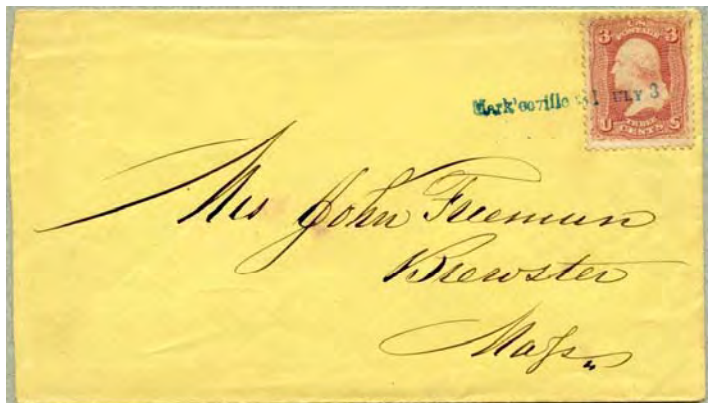
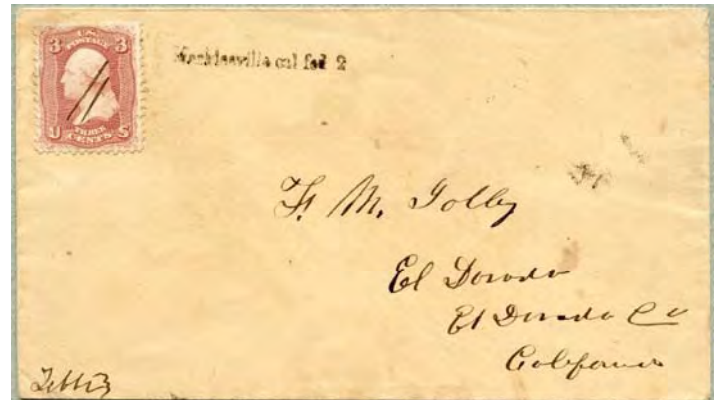


**Iowa Hill, Placer County**

A cover with a straight line marking over three 1c 1851 stamps which is repeated on the envelope is shown on a telegraph cover in Letters of Gold (Figure 14, above). This envelope is dated as used in 1856. It is not listed in Williams. It is to be noted that Williams only lists Iowa Hill postmarks after 1901 but Iowa City as early as 1855. But, there is no question about the spelling in the straight line postmark “IOWA HILL”. The cover also shows an oval “FREE” because of the addressee.



YOULON” is the name of the postmaster, William Youlon, who was not an official postmaster. This is the only handstamped postmaster marking known from early California. It was not legal for a postmaster to use a handstamp rather than a free frank, but all examples seen appear to have been honored by other postmasters.



### Knight's Ferry, San Joaquin County

This town had a two-line straight line postmark, which is fairly scarce in red, but rare in black. The red variety is shown in Figure 15 (upper image above) as an unpaid 10 cent rate to Vermont. Figure 16 (lower image above) shows an example of the black variety paying a similar rate in 1854.

### Markleeville, Amador County, later Alpine County

A cover showing this straight line postmark is shown in Letters of Gold.. It is undated and difficult to see so I originally intended to show the drawing of this straight line marking from Williams. It is dated from 1864 while in Amador County because after six months it was a part of Alpine County.

But then Oscar Thomas came up with images from three new covers. One of these shown in Figure 18 (upper image above) shows the marking in black. But a second cover shows the same marking in blue (Figure 19, lower image above). This cover is dated in July, 1864 at which time Markleeville was in Alpine County. And then there is a later third



### Laporte, Sierra County

I first came across this marking (Figure 17, above) when writing about postmaster and county markings for a series of articles in *The Chronicle* of the U.S. Philatelic Classics Society in 1991. The “W

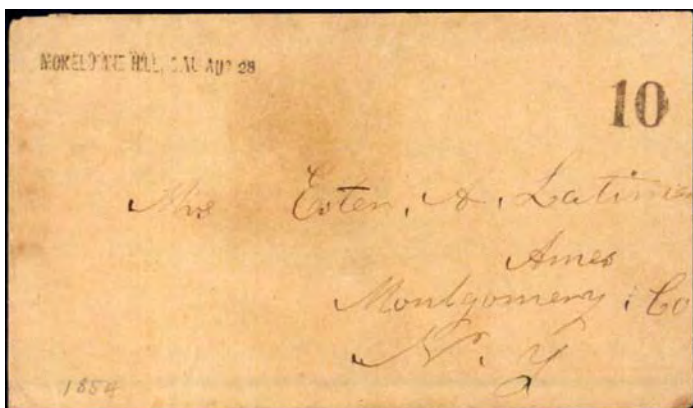


cover with an unreported all capitalized marking in blue (Figure 20, above). This is a marking not listed in Williams.



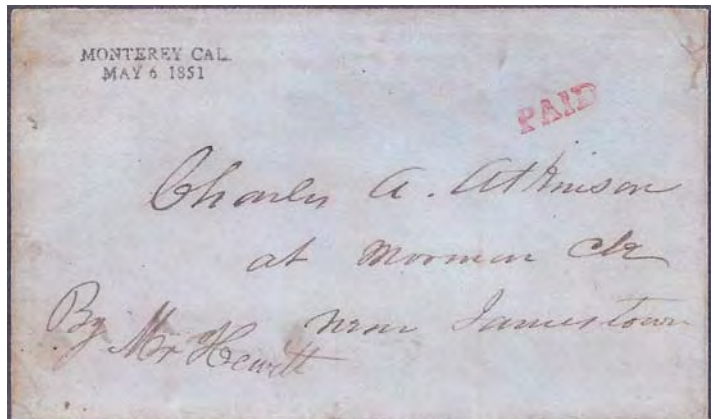
**McDermott’s Bridge, San Joaquin County**

An oval postmark reading “MAC DERMOTT S BRIDGE CAL” is shown on a 10 cent 1853 entire in Figure 21 (above). This is actually a double oval with the inner one thinner. Williams’ dating is from a stampless cover with 10 cents rate to Spring Hill, Mo.



**Mokelumme Hill, Calaveras County**

Williams illustrated two different 1854 straight lines for this town, one dated Aug 28 and the other Aug 30. Figure 22 (bottom of left-hand column) and Figure 23 (above) show these two markings on different covers. These are not the only known covers with the markings, but they are very rare. I would point out that the dating is in smaller lettering, both appearing to be the same size.



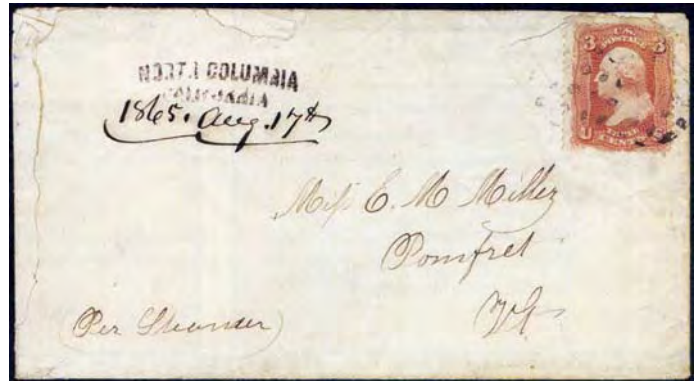
**Monterey, Monterey County**

There appears to be only a single cover that shows this straight line marking (Figure 24, above). The cover shows a perfect strike, but does not bear a postal rate marking. The straight line is in black and the “PAID” is in red. I have not seen the actual cover and do not know if it has a certificate.



**Mormon Island, Sacramento County**

This fancy oval marking was used for a number of years. The illustrated example shown in Figure 25 (above) shows the prepaid rate from California with stamps. In addition to the marking being a double arc, there are two different decorative markings on each side of the “CALA.”



**North Columbia, Nevada County**

The cover in Figure 27 (above) showing a double arc postmark (two curved lines) reading “NORTH COLUMBIA/ CALIFORNIA” with manuscript dating is described as the only example of this marking.. It is dated 1865 in the dating of the marking. The marking is unlisted in Williams.



**North Branch, Calaveras County**

This town used a rimless circle postmark in 1854-6, but Figure 26 (above) shows an unlisted arch type postmark paying a double rate during the 1851-1855 period. The cover does not appear to have a definite yeardate.



**North San Juan, Nevada County**

The marking of the next marking shown in Figure 28 (above) is quite unusual. The lettering is in an arch format (“NORTH SAN JUAN” curved and then “OCT” and “CAL.” horizontal), but this is then enclosed within an oval. Williams only listed a single example with January 9 dating, but the cover in the illustration is a different date, Oct 7, 1857.



**Oroville, Butte County**

As can be seen in the illustration, Figure 29 (above), this marking is two straight lines separated by a space in which there is a manuscript dating. The drawing in Williams gives dates of May 31 to June 17, 1856. If correct, that would make the illustrated marking the latest date. Note that the drawing in Williams shows an “I” in “Cal” where the illustration shows no “I” (two strikes too). A May 31 example is shown in *Letters of Gold* and that picture shows the “I”. So, at some date during its usage, the marking lost the “I” of “Cal”.



**Sacramento, Sacramento County**

The two most well-known early California straight lines are the ones from San Francisco and the ones from Sacramento. The latter is the more rare and is in two lines with year date and “40” postal rate (Figure 31, above). This example “SACRAMENTO 40 / OCT 28 1849” is one of the finest known and includes a very fine letter:

*California Gold Diggins, Oc 21st 1849*

*Dear Uncle*

*I say gold diggins I can't hardly tell you where I am we are in such a wild country. We are on the American Fork about 230 miles above San Francisco at a place called the Salmon Falls. We have been here 2 weeks and 2 days. The first week Jas C. and myself dug out of the bed of the river \$240.00 the next week we turned out \$260.00, this week I think we will turn out about \$200 although it appears to be quite a lottery You can not take up a bag full of dirt without getting more or less gold, some men get \$50 or \$100 by pulling up a rock. I have now in my possession \$125 of yours Jas C. earnings. The work here is very hard the place where we are working is similar to Bergen Hill that is the rocks we have to pry them apart and take the sand and dirt to the river and wash it in a cradle and then it leaves a black sand which we wash out with a basin. I sent an order home drawn on you for Mrs. Sands for \$20. I have the money in gold dust. It is so far to San Francisco that I can not get there now and the rainy season soon will set in that it stands me in hand to make some thing. It would cost me \$400 including lost time to go*



**Punta Arenas, Mendocino County**

According to Williams this blue oval marking was in use from late 1861 to mid -1867. The marking contains a year dating so each example can be dated accurately. Figure 30 (above) shows an example with 1866 dating on a stamped entire.

to San Francisco. I put your goods in a commission house as I stated in former letters. I have had no word from home since the 27 May and that was from my wife. We get to work at day break and work till sun down. It is a wretched way of living amongst Indians sleeping in tents on the ground but still I keep my health and am satisfied...Provisions is very dear here \$40 per bbl for pork venison which is plenty 50¢ per lb lumber \$1 per f. and every thing in the same ratio. I should like to send some money home to my wife but I can not get to where I can send it without a great expense however I shall in the spring as soon as the water falls. I shall send a draft home which will make you stare. Direct your letters to San Francisco as I may go some where else. I think that I shall be home to eat a 4 July dinner with you, by that time I shall have my pile...sending my love to one and all. I am in Good spirits Yours truly John Van Devontee [?]



autograph dealer, had a small group of covers addressed home from a gold miner. He had sold the letters separately. To prevent competition, we bought it as a group and then had our own auction. Fox got the “STEAMER TIMOUR” cover (M-1374) which he sold to Paul Rohloff, and I got this Sacramento cover. I cannot remember what Howard picked out, but these were the two best covers. I recently purchased a Sacramento oval with bold 40 from the correspondence; the cover has been repaired.

In addition to the straight line Sacramento used an oval postmark. Figure 32 (top of next column) shows this oval in combination with a double oval “PAID 40”, a very rare combination which is probably the most fancy early California postmark combination. This cover was the first California cover in my collection. The story of my acquiring it is rather interesting. In 1956 or 1957 Howard Lehman, John Fox, and myself (still in high school) discovered that Charles Hamilton, the famous

A third cover from Sacramento shown in Figure 33 (at the bottom of page) is an oval postmark to which was added a “40” to show the unpaid 40 cent rate of postage. I call such covers “integral rated covers”.<sup>(3)</sup> The circular Nevada City markings and the Marysville series are examples in a circular format. Circular format 40 cents integral rate covers from the East are known from Boston, New York and Lowell, Massachusetts.



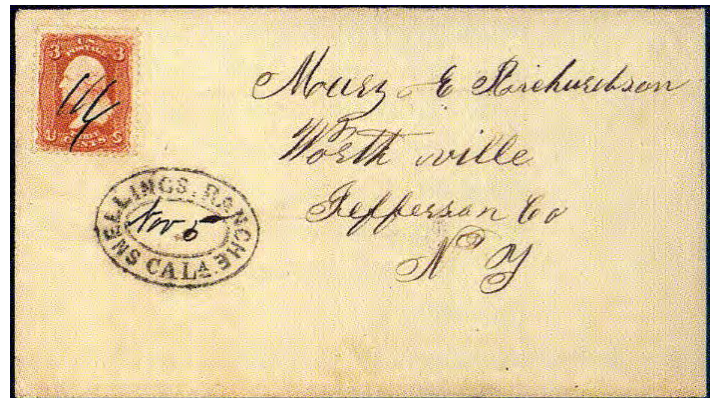


**San Francisco, San Francisco County**

This marking shown in Figure 36 (bottom of left-hand column) is the famous early straight line used at San Francisco on three sailing dates.<sup>(4)</sup> This cover is one of those on the first date, June 20, 1849. It went to Hiram Deats' grandfather.

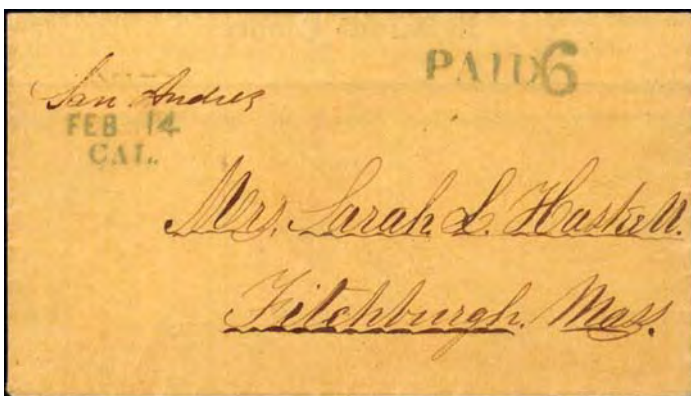
**San Andreas, Calaveros County**

This marking, Figure 34 (above), is a rare early straight line marking used for three months in 1856. In style it resembles the San Francisco and Benicia straight lines. The illustrated cover is the earliest known example and shows local intra-California usage. The August 4, 1856 usage is on a 10 cent 1853 entire addressed to Minnesota.

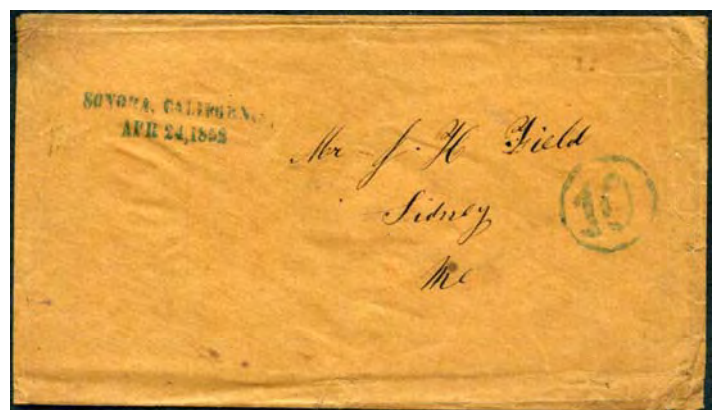


**Snellings Ranch, Mariposa County**

Williams lists an oval marking in the interval Nov. 18, 1854 to Dec. 29, 1854. But those dates cannot be correct. I list a Feb. 2 date on 10 cent 1853 entire, and the Grunin sale at Christies had a 10 1857 cent stamp tied with date July 26 1861. I have seen four other covers, too. The illustration, Figure 37 (above), shows a 3 cent 1861 usage with Nov. 5 dating. I have only seen the one marking in black. "RANCHE" is the spelling with an "E".

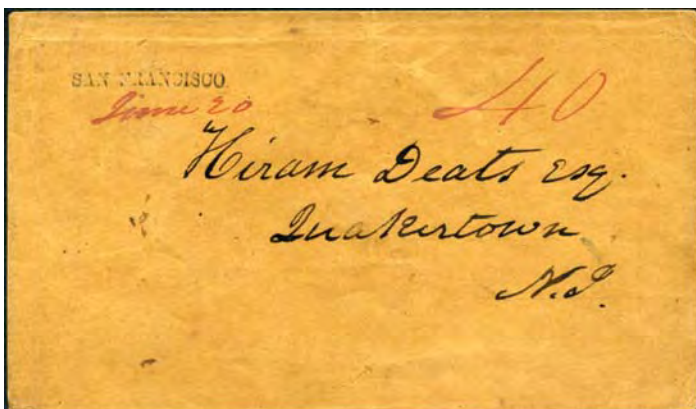


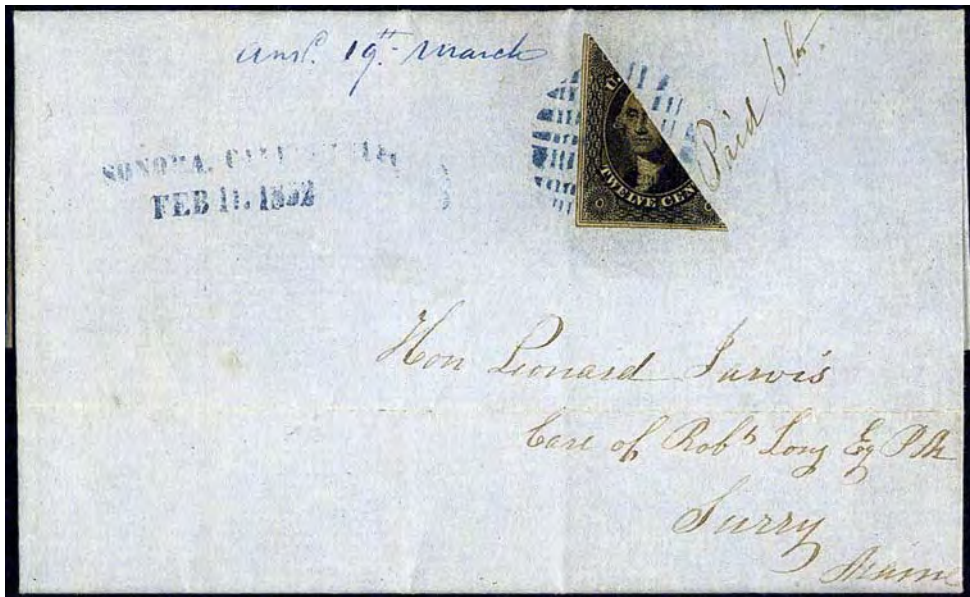
San Andreas has a second listing. Figure 35 (above) shows a straight line marking that was originally the three line Angels postmark (Figure 2), but here a manuscript "San Andreas" has been substituted on a Paid 6 stampless usage to Massachusetts.



**Sonora, Tuolumne County**

Williams has drawings for three different straight line markings. The first is a very common marking that he lists from Nov. 25, 1851 to May 3, 1852. It is in blue with "CALIFORNIA" spelled out (Figure 38, above). The reader should note that it is a year-





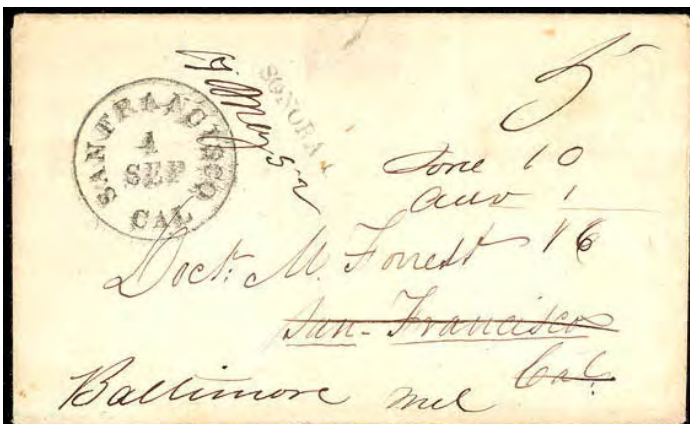
dated postmark. One of four 12 cent 1851 bisect usages is shown in Figure 39 (top of page). They show manuscript “Paid 6 cts” notations.

I own the third cover in my advertised marking collection. Shown in Figure 41 (bottom of left-hand column) it has “SONORA C” in larger black letters used on a cover from San Francisco that was forwarded after it was advertised to Baltimore with all postage due, 16 cents. There is a fourth interesting postmark from Sonora too, a “5” numeral in negative.



The second listing is only known from one cover (Figure 40, above). The marking is in black with “CAL.” spelling. It is upside down and a poor strike on the cover.

**Stockton, San Joaquin County**



While Stockton did not have a straight line or oval town postmark, it used distinctive oval postmarks for the rates during the 40 cent rate period. Figure 42 (above) shows cover paying the 12½ cent local rate. The oval is also known in other denominations to pay the 40 cent transcontinental rate, and the 80 cent double rate.



**Uniontown, Humboldt County**

Figure 43 (above) shows a blue oval marking used on November 12, 1856. The “H. B” in the marking refers to Humboldt Bay. There is a later similar circular marking which includes the H. B. also. A different 10c 1851 stamp cover with the marking is dated October 15, 1855 so the marking was used for some time. Williams lists dates of Jul. 13, 1854 to Nov. 12, 1856 for the oval. Therefore the illustrated cover is the latest known usage.

**Weaverville, Trinity County**

The last marking is a nice oval which fortunately is not rare because of the long usage, Aug. 24, 1853 to May 29, 1855. Figure 44 (below) shows the typical black marking with manuscript “Feb 20” dating in red on illustrated miners’ envelope “PROSPECTORS” on which are two 3 cent 1851 stamps with large dotted cancel. Figure 45 (top of following column) shows a stampless usage of the same marking in red, a very scarce use.



**Acknowledgements:**

The author would like to thank the following for their contributions of images for this article: Mark Baker, Christies Auctions, John Drew, Rick Mingee, Rumsey Auction Galleries, Ken Stach, and Oscar Thomas.

**References:**

- 1.) Williams, John H., *California Town Postmarks 1849-1935*, Western Cover Society, 1997.
- 2.) Coburn, Jesse L., *Letters of Gold*, U.S. Philatelic Classics Society, 1984.
- 3.) Milgram, James W., “Domestic Postmarks Showing Integral Rate Within the Circular Postmark: California Rates”, *The Chronicle of the U.S. Philatelic Classics Society*, No. 223. 61, pp. 193-201, 2009.
- 4.) Mingee, Rick, “A Census of San Francisco’s First Two Postmarks: 1849 Manuscript and Straightline”, *Western Express*, March 2015, 65: pp. 5-20.

∞§∞§∞§∞§∞



# Overland Mails of the Westward Expansion: 1832 to 1869

By Steven Walske

In this issue, we present Part IV of Director Steve Walske’s exhibit, “Overland Mails of the Westward Expansion: 1832 to 1869”. The exhibit pages mirror, in many ways, the award-winning book he and Richard C. Frajola co-authored entitled “Mails of the Westward Expansion, 1803 to 1861”. While

seeing the exhibit on printed pages is nothing like viewing them “in the flesh,” I certainly hope our readers enjoy looking over copies of this outstanding material nonetheless.

Ken Stach , General Editor, *Western Express*

## OVERLAND MAILS OF THE WESTWARD EXPANSION: 1832 TO 1869

This exhibit examines the overland postal routes that connected the expanding American West with the rest of the world. The 1803 Louisiana Purchase and 1845-48 territorial acquisitions tripled the size of the United States, and moved its western frontier from the Mississippi River to the Pacific Ocean. Letter communications played a crucial role in enabling the consolidation of these new territories, but the Post Office Department waited until 1847 to establish the first western post office, and until 1850 to establish the first contract overland route into the new territories. Before that, private parties carried the small amount of mail sent. The period covered by this exhibit begins with the earliest known mail from the Rocky Mountains by fur traders in 1832, and concludes with the May 1869 completion of the transcontinental railroad.

### Major Overland Postal Routes



Oregon mail routes were the first opened into the Rockies. Americans mainly used the Oregon Trail north of Salt Lake City, while Hudson’s Bay Company used a route through southern Canada to Montreal (both shown in blue in the map below).



Utah mail routes connected Salt Lake City, Utah with Missouri and California, and followed the Central Route (shown in green below).



Santa Fe mail routes used the Santa Fe Trail to transport mail between New Mexico and Missouri (shown in olive below).



Colorado mail routes followed the Republican River and Platte River routes between Denver, Colorado and Missouri (shown in orange below).



California mail routes used the Central and Southern Routes (both shown in red). The Pony Express ran along the Central Route.

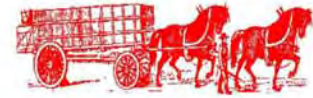


### Presentation

The exhibit is organized by major route, distinguished by different color icons at the upper right. Pre-contract mail (wagon or canoe icon) on each route is covered first, followed by contract mail (stagecoach icon).

### California Pre-Contract Mail

Introduction: July 1846 - March 1849



Emigration to California began to build in 1846 and exploded with the gold rush in 1849. Overland mails began after the U.S. gained control of California in July 1846, and virtually ended with the March 1849 start of the contract mail by steamships via Panama.

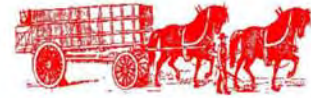
Two routes were used. The first followed the Central Route via South Pass and the second connected Los Angeles with Santa Fe via the Old Spanish Trail.



Dated May 18, 1848 in Monterey, CA - carried by Chouteau via Los Angeles and Santa Fe  
Postmarked October 11 in St Louis, Missouri - 10¢ postage due to Massachusetts

### California Pre-Contract Mail

#### Kearny Overland Mail: June-August 1847



General Kearny returned overland from California with a mail. He left Monterey on May 31, 1847 and arrived at Fort Leavenworth on August 22.



Dated April 30, 1847 in San Francisco - carried to Monterey in May 3 bi-weekly regional mail  
Mailed August 23 on steamer *Amelia* to St Louis - postmarked there on August 26 with 10¢ due



Dated May 2, 1847 in San Francisco - postmarked at Fort Leavenworth on August 31 with 10¢ due  
From sergeant in NY 1<sup>st</sup> Volunteer Regiment - carried in military dispatches to Fort Leavenworth

### California Pre-Contract Mail

Stockton Overland Mail: June-October 1847



Commodore Stockton stepped down from his California command in January 1847 and returned overland via South Pass. His party left Monterey on June 20 and reached St Joseph, Missouri on October 26.



Dated March 24, 1847 on *USS Congress* (Stockton's former flagship) in San Diego harbor  
Missed March 26 sailing of *USS Savannah* from San Diego - sent to Stockton at Monterey, California  
Postmarked October 30 in St. Joseph, Missouri with 10¢ due - **only letter known from this mail**



*USS Congress*

## California Pre-Contract Mail

Desert Dispatch: 1854 - July 1857



The U.S. secured its southern border by building forts along the frontier. Fort Yuma, California was an important link in that chain. Early mail reached it overland from San Diego via the "Desert Dispatch," a military courier service across the Colorado Desert.

This route was a necessary precursor to portions of later southern overland contract routes.



Posted September 14, 1855 at West Point, NY - prepaid 10¢ and endorsed "Via San Diego"

Carried by USMSC *Empire City* from New York on September 20 to Aspinwall on September 29

PMSS *Golden Gate* from Panama City on September 30 to San Francisco on October 16

Coastal steamer to San Diego and then overland via the "Desert Dispatch"

**Fewer than ten letters carried by this service are known**

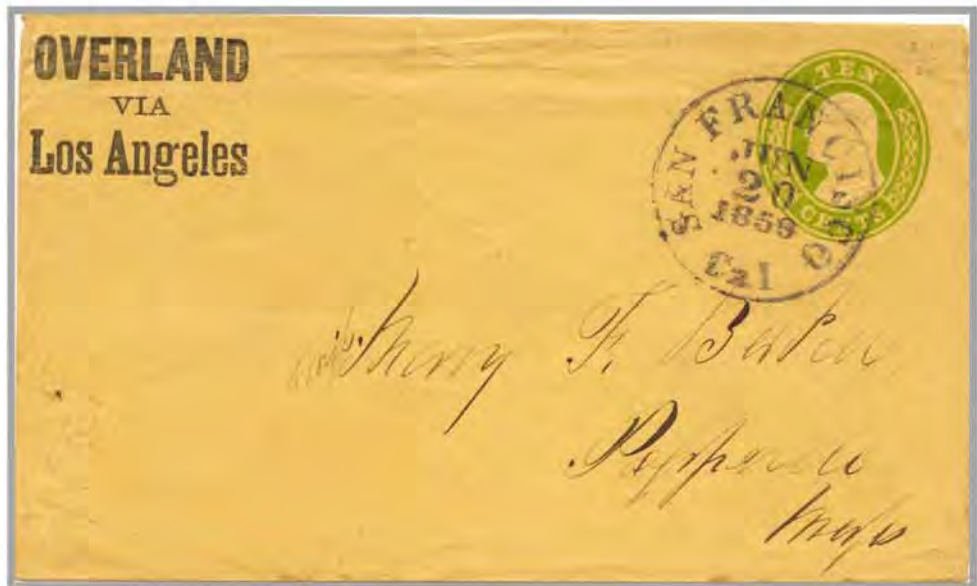
### California Contract Mail

Introduction: September 1858 - April 1861



After unsatisfactory experiences in 1850-56 with contract mails on the central overland route via Salt Lake City, virtually all contract transcontinental mails were carried via Panama from 1848 to 1859.

Strategic interests led the Post Office to sign significant contracts for overland mail via more reliable southern routes in 1857-58. The southern overland route via Los Angeles became the default for transcontinental mails on December 17, 1859.



Postmarked June 20, 1859 in San Francisco - franked 10¢ for over 3,000 miles  
Butterfield stagecoach left on October 19 - early pre-printed "Overland" envelope

## California Contract Mail

Stockton Contract: September 1858 - April 1861



The Post Office Department signed a monthly contract with Jacob Hall for Route 15050 between Kansas City, Missouri and Stockton, California. Service began on October 1, 1858 along a southern route via Santa Fe. Service was not satisfactory, so the contract was annulled effective July 1, 1859. The six successful trips carried a total of three letters.



Postmarked January 21, 1859 in Dutch Flat, California - endorsed "via Stockton" and prepaid 10¢

Mail party left Stockton on February 1 and reached Kansas City around March 29

**Only known letter carried on this route**

### California Contract Mail

**Butterfield Contract: September 1858 - April 1861**



Congress authorized a twice-weekly transcontinental overland mail between St. Louis and San Francisco via Texas and Los Angeles on March 3, 1857. Route 12578 replaced the via Panama route as the default for contract transcontinental mails on December 17, 1859.

John Butterfield's Overland Mail Co. won the contract, and the first departures were on September 16, 1858. Civil War disruptions in Texas and Arkansas ended operations on the route in April 1861.



Postmarked October 19, 1860 in San Francisco - franked 3¢ for less than 3,000 miles  
 Butterfield stagecoach left on October 19 - arrived in New Mexico around October 27  
 Forwarded from Fort Craig on November 8 with 3¢ due to Virginia

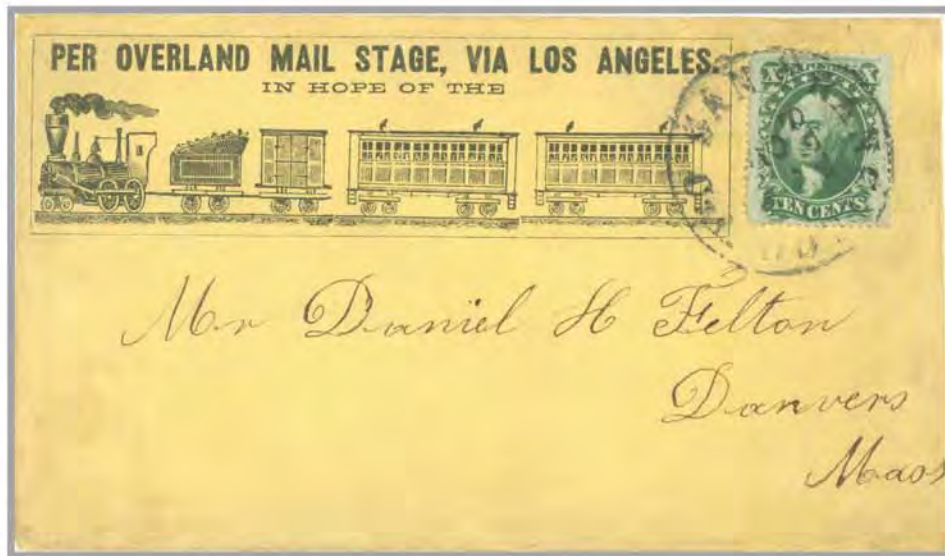


### California Contract Mail

Butterfield Contract: September 1858 - April 1861



Illustrated envelopes were used to direct mail overland via Los Angeles. Railroad designs were used as propaganda to promote the transcontinental railroad – which was not completed until 1869.



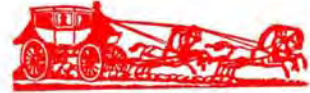
Posted September 23, 1859 in San Francisco - franked by 1859 10¢ type V



Posted June 27, 1859 in San Francisco - franked 10¢ in 1857 Issue stamps

## California Contract Mail

Butterfield Contract: September 1858 - April 1861



“Via Los Angeles” endorsements were not necessary for the Butterfield service after the December 17, 1859 Post Office overland default order. Endorsements on foreign mail are rare.



Posted March 31, 1860 in Bordeaux, France - triple-weight postage paid by 1859 80c stamps

Havre Line steamer *Arago* left Southampton on April 4 and arrived in New York on April 18

Butterfield stagecoach left St Louis on April 23 and arrived in San Francisco on May 14

“Malle Overland Via Los Angeles” endorsement

**Westbound Butterfield mail is much scarcer than eastbound mail**

### California Contract Mail

Butterfield Contract: September 1858 - April 1861



In October 1859, San Francisco introduced a straight-line "OVERLAND" routing handstamp, primarily for use on transit mail. This "dropped R" type was used until April 1860.



Originated December 1859 in Victoria, V.I. - 5d colonial postage paid per oval frank  
15¢ US postage to Canada unpaid - postmarked in San Francisco on December 30



Posted in a California mining town in early December 1859 - 15¢ postage to France paid in cash  
Routed to December 9 Butterfield stagecoach - left NY January 8 on Havre Line steamer *Arago*

### California Contract Mail

Butterfield Contract: September 1858 - April 1861



San Francisco used the Type 2 “dropped L” OVERLAND handstamp in September-October 1860. It was used as a “Too Late” marking for Butterfield mail.



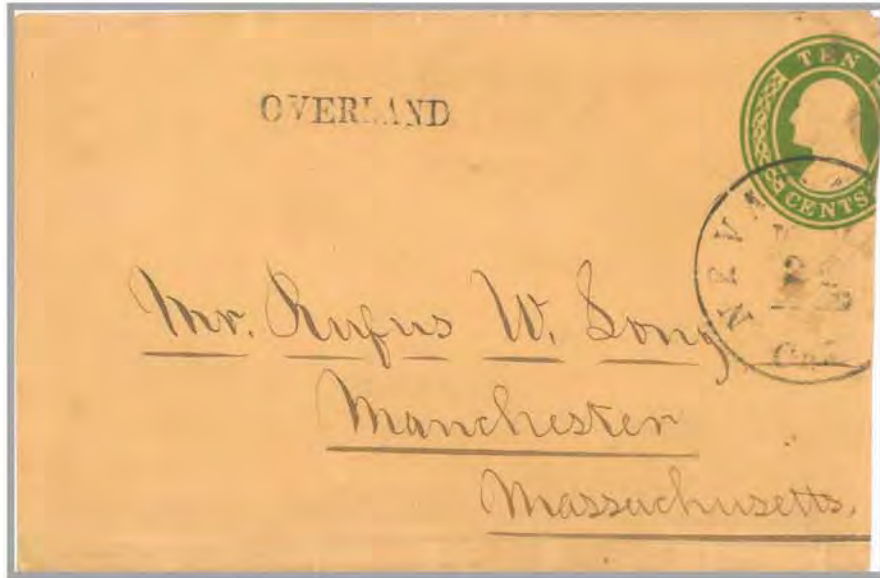
Postmarked September 24, 1860 in San Francisco - 35¢ postage to Switzerland via Aachen San Francisco Type 2 “OVERLAND” handstamp - Inman Line from New York to England



Cover front posted September 1860 in Victoria, V.I. - 5d colonial and 15¢ US postage paid at Victoria September 27 San Francisco postmark - fewer than ten type 2 “OVERLAND” handstamps known

**California Contract Mail**

**Butterfield Contract: September 1858 - April 1861**



Posted November 26, 1860 in Nevada City, California - franked by 1855 10¢ Nesbitt entire  
Fewer than five Nevada City “OVERLAND” markings are known, used June-November 1860



Posted October 10, 1859 in Sacramento - transcontinental postage paid by 1857 10¢ type III  
Straight-line “OVERLAND” Sacramento routing handstamp - fewer than ten examples known

## California Contract Mail

**“Jackass Route” Contract: July 1857 - March 1860**



In August 1856, Congress authorized a twice-monthly contract for Route 8076 between San Diego, California and San Antonio, Texas. Service began on July 9, 1857 along a southern route via Fort Yuma and El Paso. Mules were used on the San-Diego-Yuma segment, giving rise to the “Jackass” moniker. The start-up of the Butterfield route over much of the same route led to a curtailment of this route, effective April 1, 1860.



Postmarked September 9, 1857 in San Diego, California - postage prepaid by 1857 10¢ type III stamp  
Mail party left San Diego on September 9 - letter postmarked on October 8 in transit at San Antonio

**One of two known letters carried on this route**

## By Way of Desert Dispatch or Military Express

By Oscar Thomas, WCS #1053



Los Angeles Cal. postmarked cover to Lieutenant Beekman DuBarry at Fort Yuma. This postmark is known used from 1855 to August, 1856; thus, carried by military express from San Diego to Fort Yuma (courtesy Schuyler Rumsey Philatelic Auctions, Inc., Sale 62, Lot 64).

A recently discovered cover addressed to Lt. Beekman DuBarry at Fort Yuma, mailed from Los Angeles, has raised questions about the entire DuBarry correspondence to Fort Yuma. It is believed that eight or ten such covers reside in collector's hands. In the past, the routing of these covers was thought to have passed over a section of contract mail route 8076, which was established June 22, 1857 and began operating July 9, 1857 between San Diego and San Antonio, Texas (over the so-called "Jackass Route"), or by military steamer up the Colorado River. James Blaine recently performed a search of records at the National Archives in Washington, military records at West Point, and period newspapers from San Diego, from which it has been determined that none of the DuBarry covers moved over what collectors today call the Jackass Route. Furthermore, it is believed that none of the covers were routed by way of steamer up the Colorado River.

The trigger that started this review was a recently discovered cover (shown at the top of this page) with a Los Angeles postmark known used between 1855 and August, 1856. This postmark predated the establishment of the San Diego to San Antonio contract mail route by about a year. Furthermore, DuBarry's military records reveal that he had been

reassigned to Minnesota many months before the Jackass Route began to operate.

The military had established an overland express service between San Diego and Fort Yuma prior to 1857, operated by Samuel Warnock and Joseph Swycaffer, who had recently been discharged from the U.S. Army. This previously unknown mule express was called "The Desert Dispatch" and operated from 1855 to 1857. They carried private mail and military dispatches by way of a contract with the U.S. Quartermaster. No regular mail service, other than this express, was in place until the Jackass Route was established in 1857.

Thus, the DuBarry correspondence took place before the establishment of the contract mail route known as the Jackass Route. The removal of the DuBarry covers from that route's previous listing of covers reduces the number of known covers actually carried over mail route 8076 to as little as perhaps two.

Nonetheless, any DuBarry correspondence covers to Fort Yuma have to be regarded as still relatively rare, being carried by military express from San Diego to Fort Yuma.

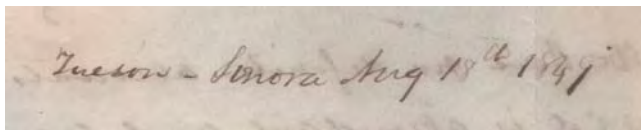
∞§∞∞§∞§∞∞

## Crittenden - The Missing Link

By John Birkinbine II



The “Crittenden Correspondence Revisited” extensive article by Paul Franklin in the March, 2016 issue of *Western Express* mentions on page 8 an undefined southern route through Mexico taken by Alexander P. Crittenden and his party on their journey to California. A letter to his wife in Brazoria, Texas dated August 18, 1849, sent from Tucson, Sonora, defines that route.



*Since leaving Chihuahua we have been progressing steadily and without accident or adventure. We have been a month on the road, have traveled somewhat over 500 miles and are now 80 or 90 from the Pimos Villages on the Gila. From that point it is 200 miles to the crossing of the Colorado – thence 200 or 250 to Pueblo de los Angeles. It will take us about 35 days yet to reach that place.*

*The road is crowded with emigrants within 20 miles of us there are not less than 100 or 150 wagons. The road is a great highway thronged with men, women & children.*

The brother-in-law, Alexander Jones, mentioned in the article is also accounted for. He was involved in a

Bowie knife fight, killed his opponent, and was wounded in the left breast. He was not able to travel and was left in Chihuahua to recuperate.

This folded letter (shown at left) was carried by a merchant to Guaymas and mailed with a faint blue straight line “PUERTO DE GUAIMAS” marking. It then traveled by ship down the Gulf of California to San Blas, then overland via Tepic, Guadalajara and Mexico City to Vera Cruz, with a circular transit marking “FRANQUEADO/

VERA-CRUZ Octubre 22”. From Vera Cruz, it travelled by ship to New Orleans, where a circular red “NEW ORLEANS/La. NOV” and “SHIP 12” were applied. Total postage was calculated as 2¢ captains fee + 10¢ postage for over 300 miles = 12¢ due from addressee in Brazoria, Texas.

The acquisition of this folded letter by the author makes an interesting story. Reading about the Frajola auction discussed in the article, your author flew from Tucson, AZ, to Danbury, CT. to bid on the large lot containing it. The bidding finally resulted in serious competition with a phone bidder. Guessing that the opponent was a cautious Floyd Risvold, a jump bid by several increments resulted in silencing the phone bidder.

Several days after arriving back in Tucson, Richard Frajola phoned and stated he had to have the lot for a client and would provide a nice profit. The response was that Floyd could have the lot less the Tucson folded letter, and at the auction price reduced by fair market value of the letter. After some complaining, that transaction transpired. Occasionally, Floyd would later attempt to pry the folded letter from my Arizona collection, but that would never happen. We remained the best of friends nonetheless.

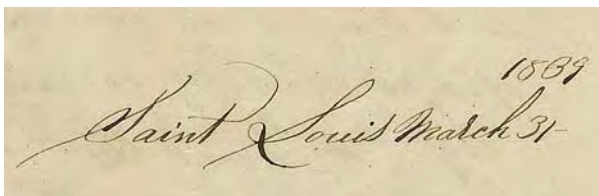
∞§∞§∞§∞§∞

## Contents of the Cover

By David F. New



The contents of this folded letter mailed from “St. Louis, Mo. Apr 1” (1839) with manuscript 25 rate marking to New York are the feature of this issue’s “Contents of the Cover” segment.



Saint Louis March 31, 1839

Dear Cousin

Your letter dated January the 18<sup>th</sup> came safe to hand and like yourself I must apologize for not writing sooner. Still it is better to write at the Seventh hour than to remain silent. It seems that Shakespeare has taken up your attention of late, and it is certainly a work well worthy the attention of every man of letters. I must say I am sorry that I ever pursued it as it has almost destroyed my interest in the play.

The passages you quote are indeed beautiful and their are others in Coriolanus and Julius Cesar that are quite equal. The speech of Mark Anthony is certainly a masterpiece and for eloquence is unequalled by anything I have ever read. We have here one of the finest morals that Shakespeare has ever given us although it is one that is seldom

followed up. The moral that I deduce from it is this. “Be not governed by your feelings” and it is one that is not thrown away on me. I do not agree with you in saying that Shakespeare [was] the greatest author that ever lived for I cannot help thinking that Pope is his superior.

This is possibly the last letter that you will ever receive from me at least – I shall not write again. Shortly, not that I have any dislike to drop our correspondence and I think I may safely say that you have not, but I will be where a letter cannot easily reach me. I am going to the Oregon Territory and will start on the 4<sup>th</sup> of April. Whether I will come back or not is a thing that circumstance must decide. I would like to have Joseph Berrien go with me for I think he would enjoy the trip.

“We would then together beat that ample field to  
what the open field the cover yield  
Eye natures walks shot folly as it flies And catch the  
manners of living as they ride.”

You may think it strange that I should leave friends and home and go to the country inhabited by only a few Fur Traders and Indians but I think I have sufficient inducement although I am actuated in part



Map showing the route (via Fort Hall, in what is now Idaho) that Wiggins took from Missouri to Oregon in 1839.

*by curiosity. I am going in the company of about 20 or 25. We will go from this place to the mouth of the Columbia River then go south along the coast and perhaps to California. If we see any prospects of making money we will remain, but if dissatisfied we will return. We will go on the horse back and kill our provisions on the road. Each man takes a mule and on it packs as many goods as he thinks proper to take which we will sell to the Indians and thereby clear expenses.*

*I am informed that there are 50 families in the St. Charles that intend going there this season. There are also many others in Illinois and Ohio who would like to go if they had only a history of the Country, and it is the general opinion the that the Territory will be soon settled. Oregon is represented by all who have been there as one of the healthiest Countries on the globe and in fertility of soil it is not surpassed by any land in the valley of the Mississippi. There is [a] splendid Cod Fishery on the coast and the rivers abound with Salmon. There is [are] also wild Cattle in abundance and any quantity of wild horses to say nothing about the exhaustible quantity of game. The climate is said to be rather mild than it is here and not so changeable. Nothing of import has transpired here of since I last wrote. The winter has been very mild. The Thermometer has been down to Zero and for 17 days we had a constant thaw. The Spring is not as forward as I would like & believe I have nothing more that is worthy [of] your interest.*

*But believe me ever to remain  
Your Worthy Relative  
William S. Wiggins*

*P. S. To avoid being mistaken for another Wm Wiggins who resided in this city, I have put an Initial middle of my name.*

W S W

William Wiggins was born in 1817 and died in 1880. He was in a party of emigrants traveling to California and then on to Oregon in April, 1839 that included Charles Klein, D. G. Johnson, and David A. Dutton. They were followed by Presbyterian missionaries from Fort Hall (in what is now southeastern Idaho) as the Wiggins party had no guide to California. Wiggins and Dutton, along with other travelers, sailed from Fort Vancouver (Oregon Territory) on the ship *Lausanne* to Bodega Bay (on the northern coast of California) in 1840.

∞§∞§∞§∞§∞

## CALIFORNIA



### Estate Collections Wanted

**Mark Baker**

P.O. Box 1210

Pollock Pines, CA 95726-1210

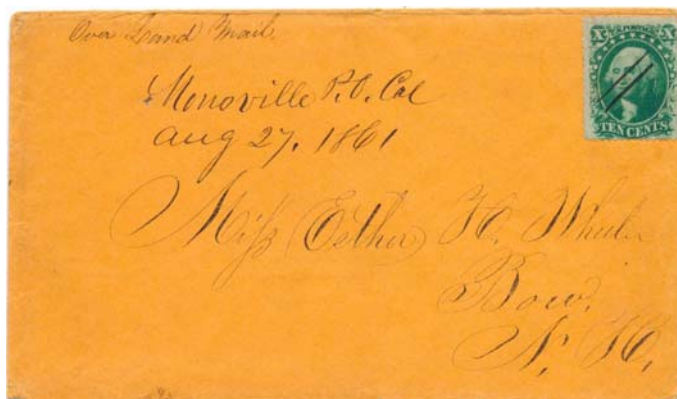
Phone: (530) 647-9025

Buying & Selling Stamps, Covers, Postcards, Old Deeds,  
Documents, Revenue Checks & Paper  
Ephemera; California & Nevada Photos

Email: [mbcovers@directcon.net](mailto:mbcovers@directcon.net)

Website: [goldrushpaper.com](http://goldrushpaper.com)

## MONO COUNTY, CALIFORNIA



### Covers Wanted for Personal Collection

**Michael A. Kent**

P.O. Box 2466

Rancho Santa Fe, CA 92067

Phone: (760) 497-7348

Email: [Michael.A.Kent@att.net](mailto:Michael.A.Kent@att.net)

## CLASSIC STAMPS AND COVERS



### Buy or Sell

**Stanley M. Piller & Associates**

800 S. Broadway, Suite 201

Walnut Creek, CA 94596

(P.O. Box 559, Alamo, CA 94507)

Phone: (925) 938-8290

Fax: (925) 938-8812

Email: [stmpdlr@aol.com](mailto:stmpdlr@aol.com)

Website: [www.smpiller.com](http://www.smpiller.com)

There is only one name when buying and selling Western Postal History:

SCHUYLER J. RUMSEY AUCTIONS, INC.



Sold \$6,000

December, 2015



Sold \$3,500

December, 2015

Year after year, we are selected when selling  
Western Postal History.

Schuyler  
Rumsey  
Philatelic  
Auctions

47 Keamy Street  
San Francisco  
California 94108  
t: 415-781-5127  
f: 415-781-5128

[www.rumseyauctions.com](http://www.rumseyauctions.com)  
[srumsey@rumseyauctions.com](mailto:srumsey@rumseyauctions.com)