

KANSAS TERRITORY ~ 1860's

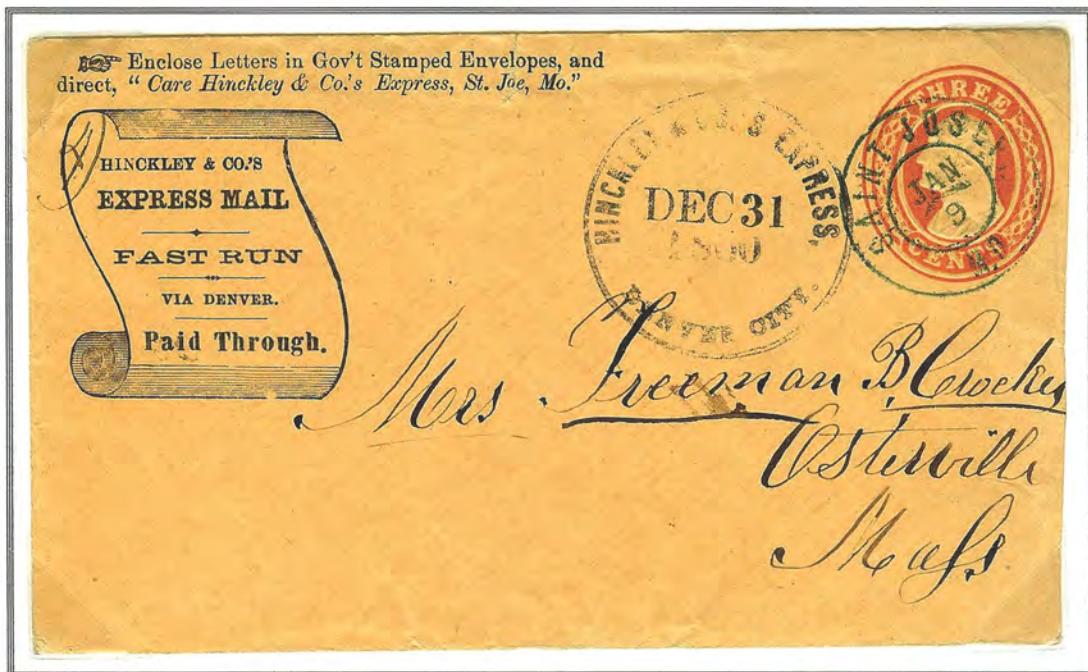
Western Express Mail Routes

Hinckley & Company Express Mail



Denver City, K. T. October 29, 1860

Letter to Mrs. R. M. Pease, Superior, Douglas County, Wisconsin on 3 cent red Nesbitt brown entire. Early example of the Hinckley frank "Fast Run via Denver" postmarked at Saint Joseph.



Denver City, K. T. October 29, 1860 ~ St. Joseph January 9, 1861

Letter to Mrs. Freeman B. Crocker, Osterville, Mass. on 3 cent red Nesbitt on brown entire. Printed directive "Care of Hinckley & Co.'s Express. St. Joe Mo."